

# Air Booking Go! Script

## Overview

---

**Introduction** This document contains an overview of the Worldspan Air Booking Go! Script available to users on Worldspan Go! Res .

---

**File name**

File (Script) Name	Brief Description
ZG_Air.htm	This script file books air segments for a PNR. The file resides on the Middle Tier Server.

---

**Need Help?** Click on the link below to submit a question or issue to the Worldspan Help Desk: <http://www.worldspan.com>, then select the Help Desk Support link from the menu on the left.

---

**Overview** Air Booking allows the user to create flight segments through the Worldspan system. Once the availability is displayed, the user can sell, waitlist, memo confirm (MK), memo list (ML) airline segments, and add a TVL for a flight. The script encodes the city or airport names and allows the user to select the desired code if a similar name list is displayed.

The settings in the agency Availability Default Record may impact the functionality of the script. The user may wish to be aware of the defaults and bypass those options.

---

# Operating Instructions

---

## Script Conventions

- Go! Res and scripts are designed to operate in a full screen. With the cursor active in the script area, press <F11> to shrink the toolbar at the top of the screen. Then right click on the small icon toolbar and click on auto hide to display Go! Res and scripts as full screen.
- In Go! Scripts, mandatory fields are indicated by a red ► arrow. The black ▼ indicates a drop down list is available for applicable choices for the input box or the ability to scroll for more information.
- Many fields are on-click events, which means the user must click in a field before the field appears as mandatory or takes on other properties (e.g., additional input fields).
- In some cases, tabbing through a form bypasses the mandatory indicator for a field, leaving it blank results in an error (see Errors).
- Most input fields have examples of the requested information in a tool tip. A tool tip quickly appears when the pointer pauses over a button or field (mouse-over).



- Script forms may contain fields with conditions which would disable other fields and/or buttons (e.g., clicking on Alliance Availability Option disables the 8 and 24 classes of service Availability Display Options, or leaving a field blank disables other fields pertaining only to that blank field).
- The Enter key may be used throughout the scripts with the exception of pop-up boxes and the calendar.

---

## Need to Know

WfW Worldspan Res has provided the capability to pause and resume ScriptPro scripts using the keystroke combinations <Ctrl>W and <Ctrl>R. Go! Res cannot retain all the previous default keystrokes due to the browser defaults. The left side (terminal emulator/Go! Res) has retained some of the Worldspan keystroke defaults. If the focus is in the terminal emulator/Res side, <Ctrl>W pauses a ScriptPro script and <Ctrl>R resumes a ScriptPro script. The right side of the window (Index/Go! Res scripts) takes on the Browser/Windows keystroke and local macro defaults. HOWEVER, when the focus is in the right side/Go! Script/Index/Tools area, the <Ctrl>R may cause a Microsoft Internet Explorer error and throw the user out of the product or launch a macro, while the <Ctrl>W shuts down the product. It is important to check the focus prior to using keystroke combinations. To move the focus, click on the right or left side.

*Continued on next page*

## Operating Instructions, Continued

---

### Access

From Worldspan Go! Res:

- Access the script from the Book Tab in the Script Index
  - Select Air Booking - Go! to launch the script
- 

### Main Form

The main form for the Air Booking script requests the primary information for an availability display.

**Air Availability 1**

Departure date: ▶ 23OCT ▼

Departure city/code: ▶ PHILADELPHIA

Arrival city/code: ▶ ATLANTA

Time: 9A

Departure  Arrival

Airline name/code:

---

### Expanded Form

Worldspan availability display offers more options, clicking on Direct Access may limit those options. Even when not requested, Direct Access is used in booking non-stop or direct flights. Alliance codes may be used as an airline code when applicable.

**Air Availability 1**

Departure date: ▶ 23OCT ▼

Departure city/code: ▶ PHILADELPHIA

Arrival city/code: ▶ ATLANTA

Time: 9A

Departure  Arrival

Airline name/code:

Use Direct Access

---

*Continued on next page*

## Operating Instructions, Continued

---

### Calendar

Date fields display a calendar as a result of clicking on the ▼ indicator:



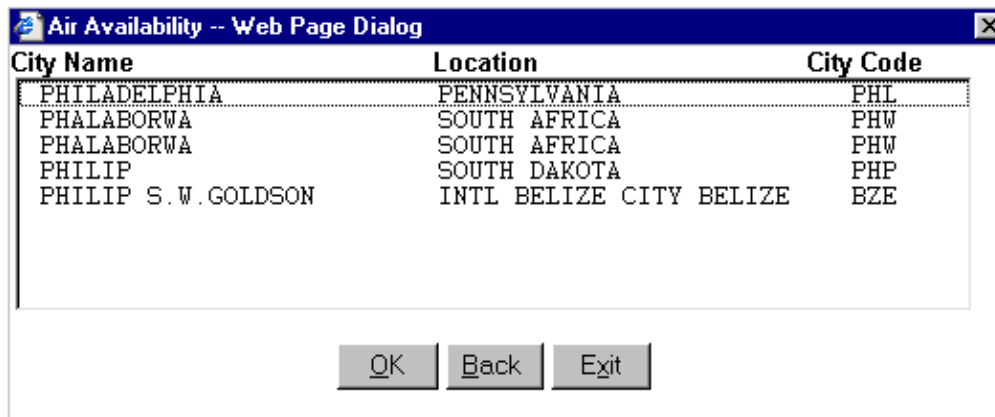
### Encode

The following displays in the form when a city/airport name is used:



### Similar Name List

The script captures up to the first 3 cities in the similar name list and returns them in a pop-up display, as shown in the example below. The user highlights the desired code/name for availability and clicks OK. The script appends the @ symbol to the city code selected to request multiple airports in the availability display.



*Continued on next page*

## Operating Instructions, Continued

**Booking Form** Availability displays in Res and the user books the desired flights using the form below. All buttons are not enabled when Direct Access is requested. Direct Access guarantees bookings and is used with the non-stop and direct flight options. Line number accepts the asterisk (\*) for connections.

### Air Availability 2

Sell type:	Line number:	Class of service:
▶ <b>Book/Sell</b>	▶ 1	▶ V
Waitlist		
MK/Memo		
ML/Memo List		
TVL/ltin only		
Number of passengers: ▶	1	
Insert after segment:		

### Decoded Flight Information

View flight service for line number:

Quick Screen Buttons				
▼	▲	◀	▶	↻
◀ i	i ▶	⌚	\$	*IA

### Decoded Flight Information

The Decoded Flight Information button expands the Flight Details in a form as follows:

**Flight Details**

US AIRWAYS FLIGHT 351

Departs: ATLANTA GEORGIA HARTSFIELD INTL APT

At: 915A On: FR 23JUN Stops Enroute: 0

Terminal: Travel Time: 1 HOUR 41 MINUTES

Arrives: PITTSBURGH PENNSYLVANIA

At: 1056A On: FR 23JUN Distance: 528MI/849KM

Terminal: On Time Record: 30-39 PERCENT

Aircraft: D9S - MCDONNELL DOUGLAS DC9 (30/40/50/80 SERIES)

JET - 2 ENGINES - 90 TO 125 PASSENGERS

Meal Service: COACH: SNACK FIRST: SNACK OR BRUNCH

LND 02

*Continued on next page*

## Operating Instructions, Continued

---

**Flight Service** View flight service for line number displays the following in the emulator:

```
V$1
FLT.NO  LEG  DAY DEP TR ARRIVAL TR MEAL  EQP SVC
#US 351  ATL PIT FR 915A 1056A  SS  D93 3
                MILES  GROUND ELAPSED  ACCUM
                528      1.41  1.41
```

---

**Navigation  
Legend**

The following portion of the Booking Form is the navigation prompts:



The text “Quick Screen Buttons” changes as the mouse rolls over each button as follows:

	Display more availability
	Display previous availability
	Display previous classes of service
	Display additional classes of service
	Display original availability
	Change availability to one day prior
	Change availability to one day forward
	Toggle availability elapsed time on/off
	Display fares from availability
	Display booked air segments

*Note: \*IA and \$ display the fares and segments in Res window 2.*

---

*Continued on next page*

## Operating Instructions, Continued

### More Options Form

The following options display when the More Options Button is clicked from the Main Options Form. Alliance or airline code may be used. The settings in the agency Availability Default Record may impact the functionality. The user may wish to be aware of the defaults and bypass those options.

#### Air Availability-Options **4**

##### Airline Options

Specific  Boost  Exclude  
 Alliance  Loyalty

##### Availability Display Options

Display:  8 classes  24 classes  
Order:  Departure time  Arrival time  
Service:  Nonstop  Direct  Single connection

##### Search Criteria

Class of service:   
Number of seats:   
Specific Connecting Cities:    
Exclude Connecting City:

### Availability Options Legend

The Res option identifiers for the availability options in forms 1 and 4 are as follows:

Form 1	Arrival /A	Direct Access @xx@	
Form 4	Specific -xx	Exclude XAxx	Departure Time *DT
	Loyalty -*xx	Non-Stop /D0	Arrival Time *AT
	Alliance -/xx	Direct /D	Single Connection /C1
	Boost /PAxx	Class of Service *Q	Connecting Cities /ATL
	8 classes .C08	Exclude Connecting City /XCATL	
	24 Classes .C24		

(xx = Airline or Alliance Code)

*Continued on next page*

## Operating Instructions, Continued

---

### Continuation Menu

The Continuation Button Menu allows car, hotel, pricing and seating functionality by calling ScriptPro scripts. In addition it provides the ability to enter an Arnk, cancel segments, display air segments, and continue with booking flights.

#### **Air Availability 3**

A vertical stack of ten buttons, each with a label and a small icon (a square with a diagonal line) on the right side. The buttons are: Return To Origin, Continue Availability, Back, Seats, Pricing, Display Air, Cancel Segment, Add ARNK, Sell Car, Sell Hotel, and Exit.

### Cancel Segment

The Cancel Segment Form accepts any cancel segment entry that begins with an 'X'.

#### **Air Availability 5**

Cancel segment(s):

*Continued on next page*



## Operating Instructions, Continued

---

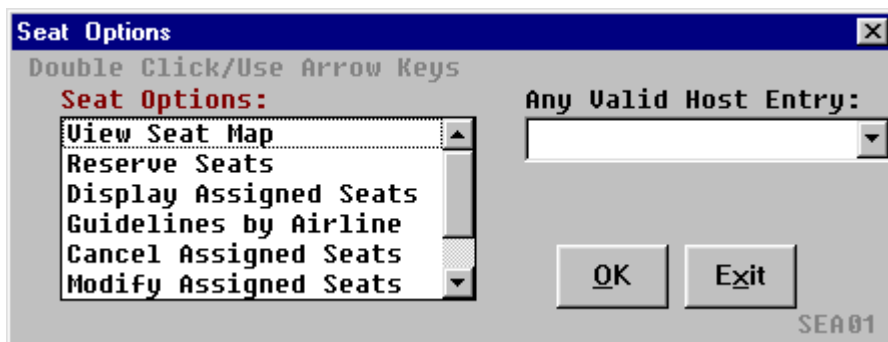
**Add Arnk** The Arnk Form provides capability for an Arnk segment to follow any segment.

### Air Availability 5

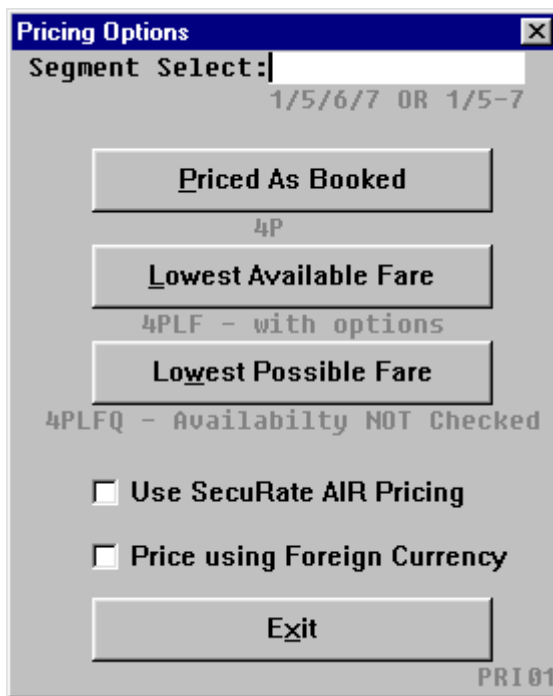
Insert ARNK after segment:

---

**Seats** Seat functionality options available in the Seat Script.



**Pricing** Pricing functionality options available in the Pricing Script.



*Continued on next page*


## Operating Instructions, Continued

---

### Errors

Mandatory fields must be populated for the script to continue. The script displays a red message on the top of the form and often places the cursor in the impacted field.

**Air Availability 1**

 **Need arrival code/city.**

Departure date:

Departure code/city:

Arrival code/city:

Time:

Airline code/name:

### Quit

To quit or stop the script, either click on the Exit or Index Button to return to the main script index or stop inputting information in the form box and use manual entries in Go! Res.

### Revisions

1/05 – Updated Need Help information.

---