

# FastMail Go! Script

## Overview

---

**Introduction** This document contains an overview of the Worldspan FastMail Go! Script available to users on Worldspan Go! Res.

---

**File name**

File (Script) Name	Brief Description
ZG_FastMail	This script processes a fax of the displayed PNR invoice/itinerary or itinerary.

---

**Need Help?** Click on the link below to submit a question or issue to the Worldspan Help Desk: <http://www.worldspan.com>, then select the Help Desk Support link from the menu on the left.

---

**Overview** The only function of this script is to send a fax of the itinerary or itinerary/invoice for the displayed PNR using the Worldspan FastMail product. It gathers the required information and populates each template in the FastMail process. The script also allows for the optional terms and conditions of travel to be faxed in English or French.

For details on accessibility, charges, templates, and other capabilities of the FastMail product, see INFO FASTMAILG and GWTS ESL in Go! Res.

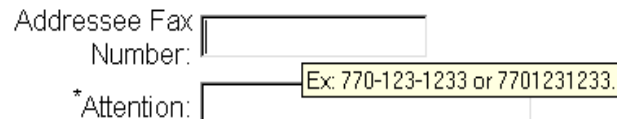
---

# Operating Instructions

---

## Script Conventions

- Go! Res and scripts are designed to operate in a full screen. With the cursor active in the index/script area, press <F11> to shrink the toolbar at the top of the screen. Then right click on the small icon toolbar and click on auto hide to display Go! Res and scripts as full screen.
- In this script only, optional fields are indicated by an \* (asterisk).
- Most input fields have examples of the requested information in a tool tip. A tool tip quickly appears when the pointer pauses over a button or field (mouse-over).



Addressee Fax Number:

\*Attention:  Ex: 770-123-1233 or 7701231233

---

## Need to Know

WfW Worldspan Res has provided the capability to pause and resume ScriptPro scripts using the keystroke combinations <Ctrl>W and <Ctrl>R. Go! Res cannot retain all the previous default keystrokes due to the browser defaults. The left side (terminal emulator/Go! Res) has retained some of the Worldspan keystroke defaults. If the focus is in the terminal emulator/Res side, <Ctrl>W pauses a ScriptPro script and <Ctrl>R resumes a ScriptPro script. The right side of the window (Index/Go! Res scripts) takes on the Browser/Windows keystroke and local macro defaults. HOWEVER, when the focus is in the right side/Go! Script/Index/Tools area, the <Ctrl>R may cause a Microsoft Internet Explorer error and throw the user out of the product or launch a macro, while the <Ctrl>W shuts down the product. It is important to check the focus prior to using keystroke combinations. To move the focus, click on the right or left side.

---

## Access

From Worldspan Go! Res:

- Access the script from the Misc Index Tab
  - Select FastMail - Go! to launch the script
- 

*Continued on next page*

## Operating Instructions, Continued

---

### Active PNR

A PNR must be displayed prior to launching the FastMail Go! Script or the script automatically exits and the Index reappears.

---

### Initial Main Form

The FastMail ID and password appear in the Main Form when the user has not previously accessed the FastMail template. Type "Start" in both the ID and password fields to enable the functionality of the script to continue.

The required fields in the Main Form are Document Type, Addressee Fax Number, and Terms. At this time, this script does not accept dashes in the Addressee Fax Number field. The default for Document Type is Itinerary/Invoice and None is the default for Terms. Itinerary or Itinerary/Invoice may be selected as the Document Type to fax. Terms and conditions of the fare may be faxed in English or French. Clicking on Reset clears all data from the form.

**WORLDSPAN FastMail<sup>SM</sup>**  
**Itinerary Faxing**

FastMail<sup>SM</sup> ID:

FastMail<sup>SM</sup> Password:

Document Type:  Itinerary  Itinerary/Invoice

\*EZ Options:

Addressee Fax Number:

\*Attention:

Terms:  None  English  French

\*Customer Reference:

*Applicable AT&T fax charges apply.*

*See GWTS ESLPRIC and GWTS ESLRATEUSC for rate information.*

---

*Continued on next page*

## Operating Instructions, Continued

---

**Main Form** The Main Form appears as follows when the user has previously accessed the FastMail template.

**WORLDSPAN FastMail<sup>SM</sup>**  
**Itinerary Faxing**

Document Type:  Itinerary  Itinerary/Invoice

^EZ Options:

Addressee Fax Number:

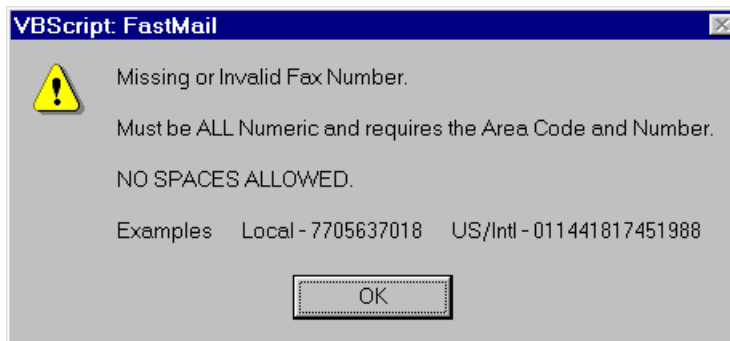
^Attention:

Terms:  None  English  French

^Customer Reference:

*Applicable AT&T fax charges apply.*  
*See GWTS ESLPRIC and GWTS ESLRATEUSC for rate information.*

**Errors** Mandatory fields must be populated for the script to continue. In this script, the Addressee Fax Number is the main focus and the following message box displays when the field is left blank or populated incorrectly.



**Quit** To quit or stop the script, click on the Exit Button to return to the main script index or stop inputting information in the form and use manual entries in Go! Res.

**Revisions** 1/05 – Updated Need Help information.

---