

ScriptPro Currency Conversion Script

Overview

Introduction This document contains an overview of the Worldspan ScriptPro Currency Conversion Script available to users on Worldspan Go! Res.

File name

| File (Script) Name | Brief Description |
|--------------------|--|
| Z4CUR.ASL | Script converts one currency to another using the most recent exchange rate. |

Need Help? Click on the link below to submit a question or issue to the Worldspan Help Desk: <http://www.worldspan.com>, then select the Help Desk Support link from the menu on the left.

Overview The Currency Conversion script enables users to quickly convert an amount from one currency to another currency. It provides a list of the countries with the codes for easy selection. The script reads the information in the response displayed in Res and displays the information in the top of the dialog box. An option to select the Exchange Rate of the “From” country or the “To” country is provided for additional flexibility.

Operating Instructions

Script Conventions

- Mandatory fields are indicated with burgundy text.
 - A black arrow pointing down indicates a drop down list is available for applicable choices for the input box, or the ability to scroll for more information.
 - Some dialog boxes may contain input fields with conditions that would disable other fields and/or buttons (e.g., selecting a Move option will disable the ability to select specific Rule Categories to view, or leaving a field blank disables other fields pertaining only to that blank field).
 - In a list where the choices are Yes or No, leaving the field blank is also No.
 - Use the <Tab> key to move in order to each input field, use <Shift><Tab> to move in reverse order, or use the mouse to click on the needed input field.
 - Some fields contain an “accelerator key.” This is an underlined letter. Pressing the <Alt> key and the underlined letter together will move the cursor directly to that input box.
 - The <Enter> key may be used in place of the OK button.
-

Need to Know

Previously, Worldspan Res had provided the capability to pause and resume ScriptPro scripts using the keystroke combinations <Ctrl>W and <Ctrl>R. Since Go! Res is on the Web, the right side of the window (Index/Go! Res scripts) takes on the Windows keystroke and local macro defaults. The left side (terminal emulator/Go! Res) has retained some of the Worldspan keystroke defaults. If the focus is in the terminal emulator/Res side, <Ctrl>W pauses a ScriptPro script and <Ctrl>R resumes a ScriptPro script. HOWEVER, when the focus is the right side/Go! Script, the <Ctrl>R does nothing or launches a macro and the <Ctrl>W shuts down the application. It is important to check the focus prior to using keystroke combinations. Simply click on the right or left to move the focus.

Continued on next page

Operating Instructions, Continued

Access

From Worldspan Go! Res:

- Access the script from the Price Tab in the Script Index
- Select Currency Conversion to launch the script

Or:

- Access the ScriptPro menu in Res by pressing <Ctrl>S,
 - Type Z4CUR.csl or scroll and highlight
 - <Enter>
-

Main Form

The main dialog box requires the input of the countries and amount for the desired conversion to occur. A drop-down list is provided for the countries with codes to enable quicker processing. The option to select the Exchange Rate of either country is provided for flexibility and/or comparison. The Clear button removes data from the input fields and the Exit button, exits the script.

Currency Conversion

Amount To Convert: 150

Enter the Country Code or Select Name:

1) From: us
JP

2) To: Austria
GB

Convert With EXCH Rate of 1st Country
Convert With EXCH Rate of 2nd Country

OK Clear Exit

CURA

Continue on next page

Operating Instructions, Continued

Response

The response is captured from the Res screen and displayed in the top part of the dialog box. The Euro fixed exchange is included when applicable.

The screenshot shows a 'Currency Conversion' dialog box with the following content:

>4C@150/AT#us Results:
USD 150
EUR 163.70
ATS 2252.56

| | |
|---------------------------|-------------|
| USD 150 | EUR 163.70 |
| US EXCH RATE .916300 | 26SEP2001 |
| EUR 163.70 | ATS 2252.56 |
| ATS EUR EXCH RATE 13.7603 | 01JAN1999 |

Amount To Convert:

Enter the Country Code or Select Name:

1) From:
JP

2) To:
GB

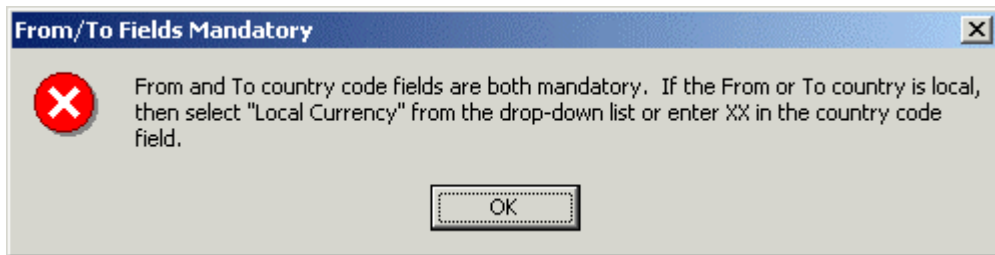
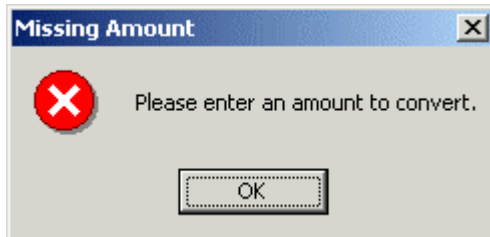
CURB

Continue on next page

Operating Instructions, Continued

Errors

The following Error messages are examples when mandatory or necessary information has not been provided:



The script reads the A.I.R. Table for the ISO default currency. The following error message occurs when "Local Currency XX" is selected as the currency and the A.I.R. Table does not have a default for the script to use.



Quit

To quit or stop the script, select the Exit Button.

Revisions

1/5 – Removed reference to WfW.
