

ScriptPro Customized World File Script

Overview

Introduction This document contains an overview of the Worldspan Customized World File Script available to users on Worldspan Go! Res.

File name

File (Script) Name	Brief Description
Z4CWF	Initiates creation of World File based on standards outlined in Z4CWFSET.
Z4CWFSET	Tool to setup standards for World Files.

Need Help? Click on the link below to submit a question or issue to the Worldspan Help Desk: <http://www.worldspan.com>, then select the Help Desk Support link from the menu on the left.

Overview The Z4CWFSET script allows an administrator to complete dialog boxes to setup the required fields to be used for the World File standards. The information obtained is stored in a text file (extension “.set”) accessed by the Z4CWF script.

The Z4CWF script enables a user to create a World File based on the requirements the administrator has input in the setup file.

Operating Instructions

Script Conventions

- Mandatory fields are indicated with burgundy text.
- A black arrow pointing down indicates a drop down list is available for applicable choices for the input box, or the ability to scroll for more information.
- Some dialog boxes may contain input fields with conditions that would disable other fields and/or buttons (e.g., selecting a Move option will disable the ability to select specific Rule Categories to view, or leaving a field blank disables other fields pertaining only to that blank field).
- In a list where the choices are Yes or No, leaving the field blank is also No.
- Use the <Tab> key to move in order to each input field. Use <Shift><Tab> to move in reverse order. Or use the mouse to click on the needed input field.
- Some fields contain a “hot key.” This is an underlined letter. Pressing the <Alt> key and the underlined letter together will move the cursor directly to that input box.
- The <Enter> key may be used in place of the OK button.

Need to Know

Previously, Worldspan Res had provided the capability to pause and resume ScriptPro scripts using the keystroke combinations <Ctrl>W and <Ctrl>R. Go! Res cannot retain all the previous default keystrokes due to the browser defaults. The left side (terminal emulator/Go! Res) has retained some of the Worldspan keystroke defaults. If the focus is in the terminal emulator/Res side, <Ctrl>W pauses a ScriptPro script and <Ctrl>R resumes a ScriptPro script. The right side of the window (Index/Go! Res scripts) takes on the Browser/Windows keystroke and local macro defaults. HOWEVER, when the focus is in the right side/Go! Script/Index/Tools area, the <Ctrl>R may cause a Microsoft Internet Explorer error and throw the user out of the product or launch a macro, while the <Ctrl>W shuts down the product. It is important to check the focus prior to using keystroke combinations. To move the focus, click on the right or left side.

Continued on next page

Operating Instructions, Continued

Access

From Worldspan Go! Res:

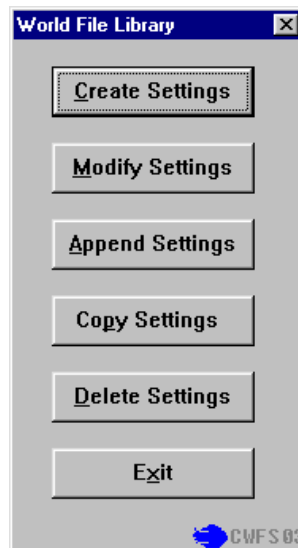
- Access the script from the Utilities Tab in the Script Index
- Select World File Standard to launch the script
- Select World File Std. Setup to launch the setup script

Or:

- Access the ScriptPro menu in Res by pressing <Ctrl>S,
 - Type z4cwfset.csl or scroll and highlight to select the World File Setup script
 - <Enter>
-

Menu options

Select one of the options from the Z4CWFSET Menu dialog box:



Create Settings - Builds a new setup file for World File standards.

Modify Settings - Change a setup file.

Append Settings - Add requirements to a setup file.

Copy Settings - Copy settings to a new setup file.

Delete Settings - Deletes an existing setup file.

Exit - Exit and terminate the script.

Continued on next page

Operating Instructions, Continued

Administrator Instructions Select “Create Settings” and enter a name for the setup file. Complete a dialog box, shown below, for each line number in the World File.

The example below shows line 601 is always a passenger name. Quality Control may be implemented to ensure the user enters the correct format (e.g., “/” and “@” must be in the name field). Other features include maximum number of characters, must enter, must fill, send example (use this to send a line without the user typing the information), send a prompt/description, lead format (adds the Worldspan function identifier and leading format before the user’s information), and Qualifier.

Line(s)	Line Type	Qualifier	Max Character	Conditions
601	A - Always Copy		54 (1-54)	<input checked="" type="checkbox"/> Must Enter <input type="checkbox"/> Must Fill

Lead Format: -
3SSRFQTV

Enter Prompt/Description for This Line Number:
Enter Passenger Name

Enter Frequent Traveler Information- See Example Below

Examples / User Notes:
SMITH/JOHN@12345@
DLHK/DL1234567890-1

Send Example Only->

Buttons: Add More Lines, Add a Continue Line, Save and Exit

Quality Control Check:
Check Agent's Entry For: /
Check Agent's Entry For: @

CVFS01

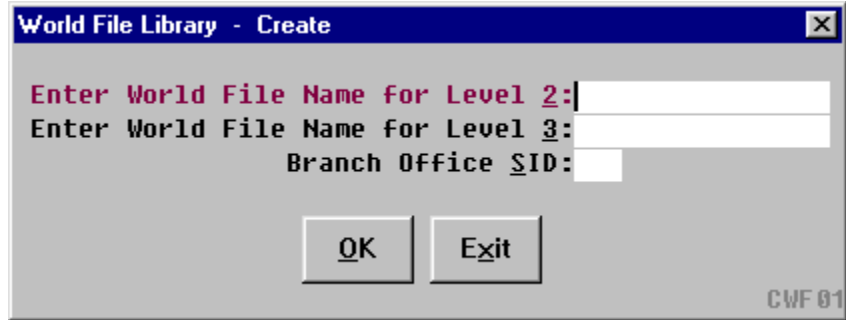
Select “Add More Lines” to repeat the dialog box until all requirements are complete. Select the “Save and Exit” button to store the setup file.

Continued on next page

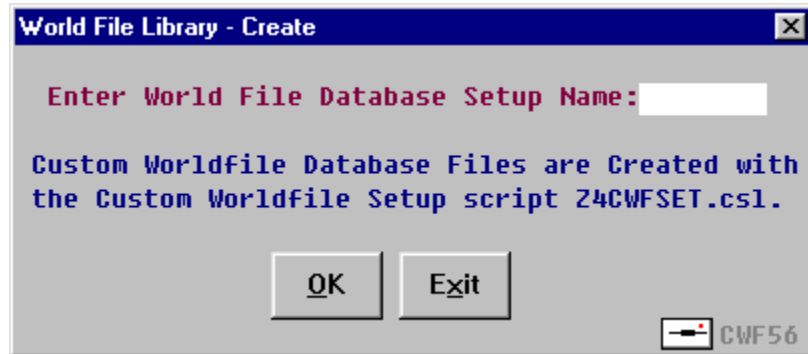
Operating Instructions, Continued

Creating a World File

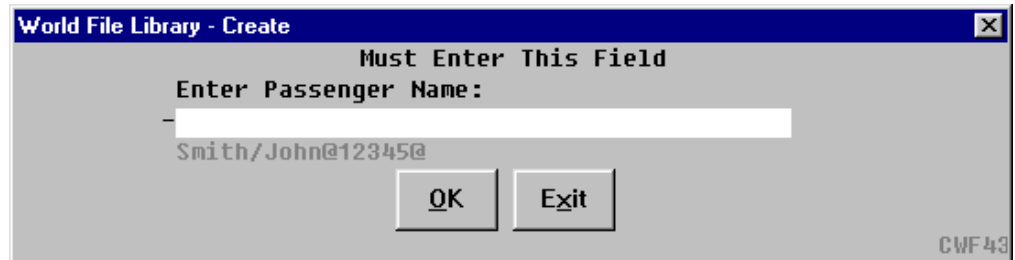
Run the W4CWF script and enter the Level 2 or Level 3 name to be created (Level 3 must have Level 2 entered for association).



The next dialog box prompts for the setup file to be used to create this new World File.



A dialog box then appears for each requirement stored in the setup file and creates the World File to those specifications.



Continued on next page

Operating Instructions, Continued

Error Message Mandatory fields must be populated for the script to continue. A message box will display and after clicking on OK, the dialog box is redisplayed.



Quit To quit or stop the script, click on the Exit Button in any dialog box, or press the Esc (escape) key.

Revisions 01/05 – Removed reference to WfW.
