

ScriptPro FastClip Script

Overview

Introduction This document contains an overview of the Worldspan FastClip Script available for users on Worldspan Go! Res!

A dial-in user may not use this script.

File name The file name is Z4FSTCLP.CSL. The setup script to establish a FastClip address is Z4ZP.CSL.

Need Help? Click on the link below to submit a question or issue to the Worldspan Help Desk: <http://www.worldspan.com>, then select the Help Desk Support link from the menu on the left.

Overview A setup file containing the FastClip printer address and default path where the file will be created is displayed the first time the FastClip script is run by a user. The setup file resides in the user's c:\wspan directory.

The FastClip script creates an ASCII text file out of an itinerary or itinerary/invoice. The default file name is the record locator (e.g., ABC123.TXT). This file can be printed for faxing, or sent in an email as an attachment.

Operating Instructions

Prerequisites To use this script, you must be in a dedicated environment (not a dial-in user). When the file is created with the itinerary/invoice information, it is directed to your agency's file server.

To use the FastClip Script, you need to have a FastClip address configured by Worldspan for your agency and each workstation must run the setup script before using this script.

If you have not had a FastClip address configured by Worldspan and/or you are not sure it has been done, contact your Worldspan Account Executive. You need **one** FastClip address per agency server.

If you run the script and your workstation has not been configured, the script detects this and proceeds to run the Z4ZP script (setup script).

One option the script offers is to direct copies of each itinerary based on a path you define, e.g., c:\fastclip. If you have multiple servers or your agency wants them stored in a specific location, you should determine this before using this script. The script does offer a default location.

Script Conventions

- Mandatory fields are indicated with burgundy text.
- A black arrow pointing down indicates a drop down list is available for applicable choices for the input box, or the ability to scroll for more information.
- Some dialog boxes may contain input fields with conditions that would disable other fields and/or buttons (e.g., selecting a Move option will disable the ability to select specific Rule Categories to view, or leaving a field blank disables other fields pertaining only to that blank field).
- In a list where the choices are Yes or No, leaving the field blank is also No.
- Use the <Tab> key to move in order to each input field. Use <Shift><Tab> to move in reverse order. Or use the mouse to click on the needed input field.
- Some fields contain a "hot key." This is an underlined letter. Pressing the <Alt> key and the underlined letter together will move the cursor directly to that input box.
- The <Enter> key may be used in place of the OK button.

Continued on next page

Operating Instructions, Continued

Need to Know Previously, Worldspan Res had provided the capability to pause and resume ScriptPro scripts using the keystroke combinations <Ctrl>W and <Ctrl>R. Go! Res cannot retain all the previous default keystrokes due to the browser defaults. The left side (terminal emulator/Go! Res) has retained some of the Worldspan keystroke defaults. If the focus is in the terminal emulator/Res side, <Ctrl>W pauses a ScriptPro script and <Ctrl>R resumes a ScriptPro script. The right side of the window (Index/Go! Res scripts) takes on the Browser/Windows keystroke and local macro defaults. HOWEVER, when the focus is in the right side/Go! Script/Index/Tools area, the <Ctrl>R may cause a Microsoft Internet Explorer error and throw the user out of the product or launch a macro, while the <Ctrl>W shuts down the product. It is important to check the focus prior to using keystroke combinations. To move the focus, click on the right or left side.

Access From Worldspan Go! Res:

- Access the script from the Utilities Tab in the Script Index
- Select FastClip to launch the script
- Select FastClip Setup to launch the setup script to configure your workstation

Or:

- Access the ScriptPro menu in Res by pressing <Ctrl>S,
- Type Z4FSTCLP.csl or scroll and highlight for the FastClip script
- Type Z4ZP.csl or scroll and highlight for the FastClip setup script to configure your workstation
- <Enter>

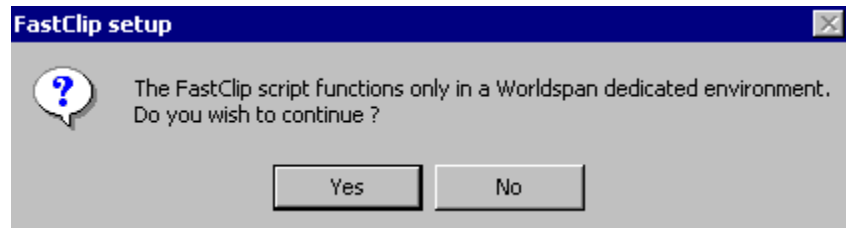
Continued on next page

Operating Instructions, Continued

Fast Clip Setup When the FastClip Setup has not been run at a workstation before or you are setting up or changing the setup information, the following message displays:



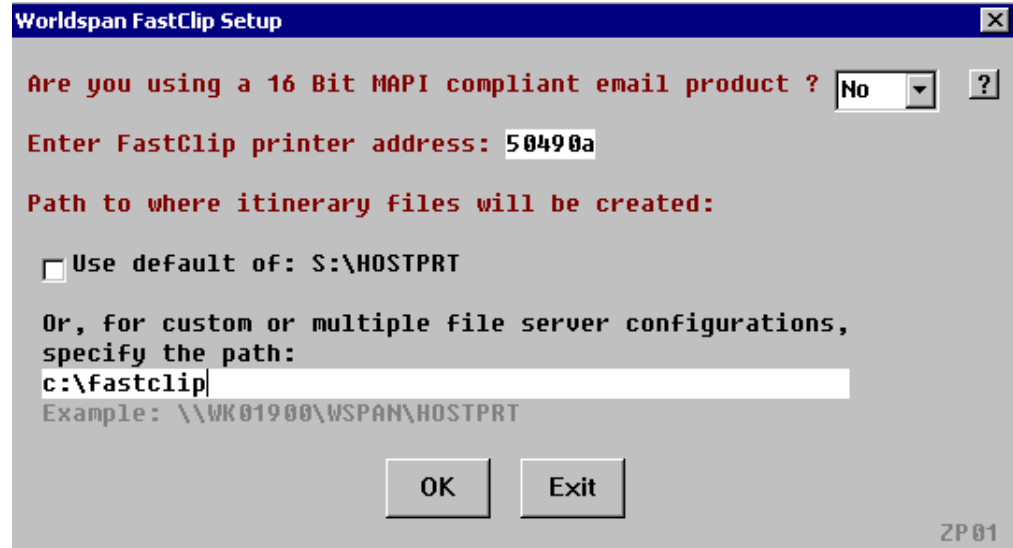
- Click on OK to continue.
- Click Yes on the next screen only if you are **not** a dial-in location.



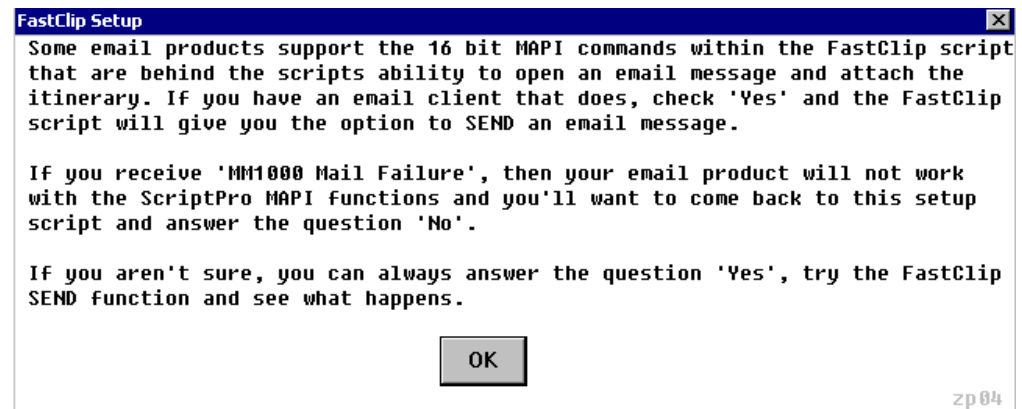
Continued on next page

Operating Instructions, Continued

Fast Clip Setup, The following message displays:
continued



- Fill in the information for your agency.
- Click OK to continue or Exit to end the setup script.
- Click on the ? (to the right of the first drop down box) to display the following help text:

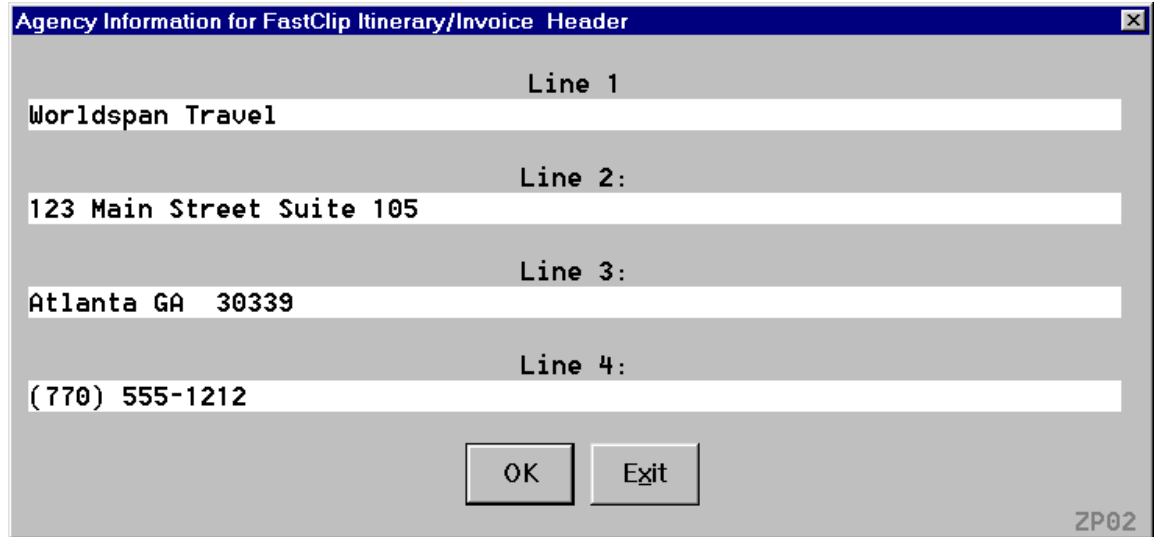


Continued on next page

Operating Instructions, Continued

Fast Clip Setup, continued

The next dialog box displays to allow entry of freeform header information that is sent in each FastClip file:



Agency Information for FastClip Itinerary/Invoice Header

Line 1
Worldspan Travel

Line 2:
123 Main Street Suite 105

Line 3:
Atlanta GA 30339

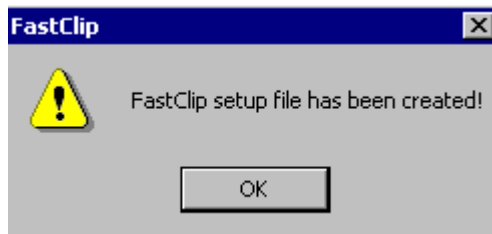
Line 4:
(770) 555-1212

OK Exit

ZP02

- Type in the free form information on Line 1. Tab to Line 2.
- Complete Lines 2, 3 and/or 4 as needed by your agency.
- Click OK to continue or Exit to end the setup script.

The following message displays when the setup is complete:



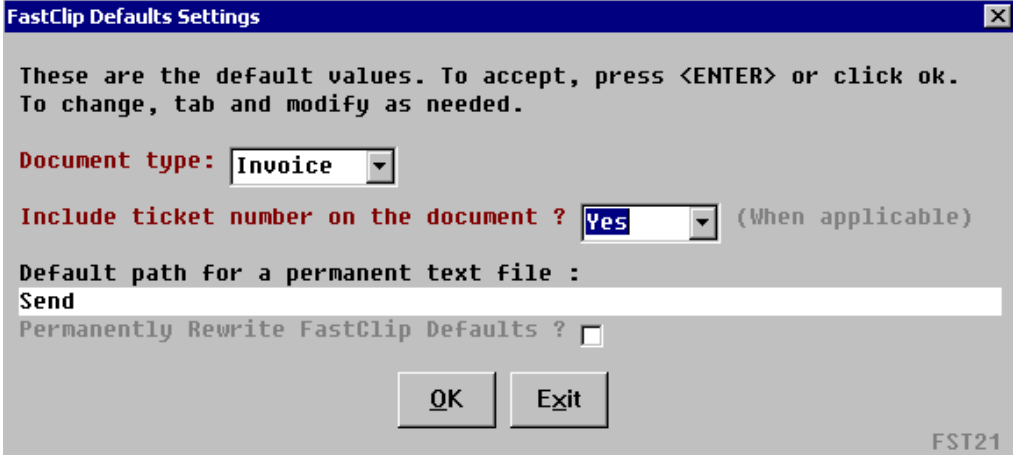
- The setup file name is either C:\WSPAN\FASTCLIP.INF or D:\WSPAN\FASTCLIP.INF.
- To make changes to this file, you can rerun the Z4ZP.csl script (permanent changes) or make temporary changes when running the Z4FSTCLP.csl script.

Continued on next page

Operating Instructions, Continued

FastClip Script Main Menu

To use the script, you should have an active PNR displayed on the screen. When you call the script (with the PNR), the following screen displays:



The screenshot shows a dialog box titled "FastClip Defaults Settings" with a close button (X) in the top right corner. The text inside reads: "These are the default values. To accept, press <ENTER> or click ok. To change, tab and modify as needed." Below this, there are three settings: "Document type:" with a dropdown menu showing "Invoice"; "Include ticket number on the document ?" with a dropdown menu showing "Yes" and "(When applicable)" to its right; and "Default path for a permanent text file :" with a text input field containing "Send". At the bottom, there is a checkbox labeled "Permanently Rewrite FastClip Defaults ?" which is unchecked. Two buttons, "OK" and "Exit", are located at the bottom center. The text "FST21" is visible in the bottom right corner of the dialog box.

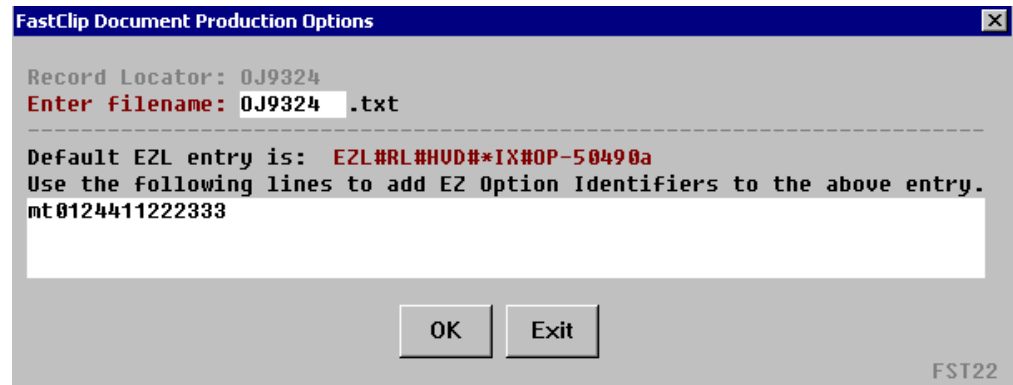
- Select the type of document you want to send. The default displays.
- If you have the system configured to save a copy to a file, type in the path for the text file or leave it blank to select the default you established.
- Check the box if you need to permanently change your default settings for FastClip (in the FastClip.inf file).
- Click OK to continue or Exit to end the script.

Continued on next page

Operating Instructions, Continued

Document Production Options

Once a valid PNR is displayed, the following dialog box displays:



1. The file name is pre-filled with the record locator of the PNR currently displayed. This is the default file name. You can change the file name, if you desire.
2. The script pre-fills the basic EZ options, including the FastClip printer address.
3. Add EZ option identifiers in the free form area. Include the # and optional identifies (e.g., #ASUE).
4. Click OK to continue or Exit to end the script.

FastClip Processing

Upon pressing OK or <Enter>, the EZN or EZL entry is sent. The following message is displayed in Res screen 1:

```
>** FILE IS BEING CREATED - PLEASE WAIT! **|
>***THIS WILL TAKE APPROXIMATELY 15 SECONDS.....|
```

Once the text file is created, the script documents the PNR with a unique remark /5.Z/ that includes the text “FASTCLIP SCRIPT USED.” The date and time are appended to this text.

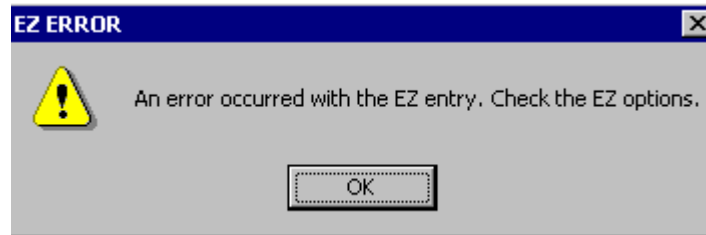
The PNR is ended and the entry to redisplay the record locator is placed on the screen. The record locator also serves as a reminder of the text file name.

Continued on next page

Operating Instructions, Continued

Errors

Mandatory fields must be populated for the script to continue. A message box will display and after selecting OK, the dialog box will be redisplayed.



- Error messages appear in an EZ Error box
- The message appears to the right of the yellow caution
- The message is in black
- When you receive an error message with this script, click OK to continue and correct the error.

Quit

To quit or stop the script, click on the Exit Button in any dialog box.

Revision

1/05 – Removed reference to WfW.
