

ScriptPro Menu Script

Overview

Introduction This document contains an overview of the Worldspan Menu Script available to users on Worldspan Go! Res.

File name The file name is Z4MENU.CSL.

Need Help? Click on the link below to submit a question or issue to the Worldspan Help Desk: <http://www.worldspan.com>, then select the Help Desk Support link from the menu on the left.

Overview This script displays 24 buttons which link you to popular scripts. New scripts are identified on this page as ***NEW***. An alphabetical list of all the ScriptPro scripts enables the user to access any script. The About Scripting Button access information on ScriptPro, descriptions of the Standard scripts, Value-Added scripts, and scripting services.

Operating Instructions

Script Conventions

- Mandatory fields are indicated with burgundy text.
 - A black arrow pointing down indicates a drop down list is available for applicable choices for the input box, or the ability to scroll for more information.
 - Some dialog boxes may contain input fields with conditions that would disable other fields and/or buttons (e.g., selecting a Move option will disable the ability to select specific Rule Categories to view, or leaving a field blank disables other fields pertaining only to that blank field).
 - In a list where the choices are Yes or No, leaving the field blank is also No.
 - Use the <Tab> key to move in order to each input field. Use <Shift><Tab> to move in reverse order. Or use the mouse to click on the needed input field.
 - Some fields contain a “hot key.” This is an underlined letter. Pressing the <Alt> key and the underlined letter together will move the cursor directly to that input box.
 - The <Enter> key may be used in place of the OK button.
-

Need to Know

Previously, Worldspan Res had provided the capability to pause and resume ScriptPro scripts using the keystroke combinations <Ctrl>W and <Ctrl>R. Since Go! Res is on the Web, the right side of the window (Index/Go! Res scripts) takes on the Windows keystroke and local macro defaults. The left side (terminal emulator/Go! Res) has retained some of the Worldspan keystroke defaults. If the focus is in the terminal emulator/Res side, <Ctrl>W pauses a ScriptPro script and <Ctrl>R resumes a ScriptPro script. HOWEVER, when the focus is the right side/Go! Script, the <Ctrl>R does nothing or launches a macro and the <Ctrl>W shuts down the application. It is important to check the focus prior to using keystroke combinations. Simply click on the right or left to move the focus.

Continued on next page

Operating Instructions, Continued

Access

Worldspan Go! Res

- Access the script from the Misc Tab in the Script Index
- Select ScriptPro Menu to launch the script

Or:

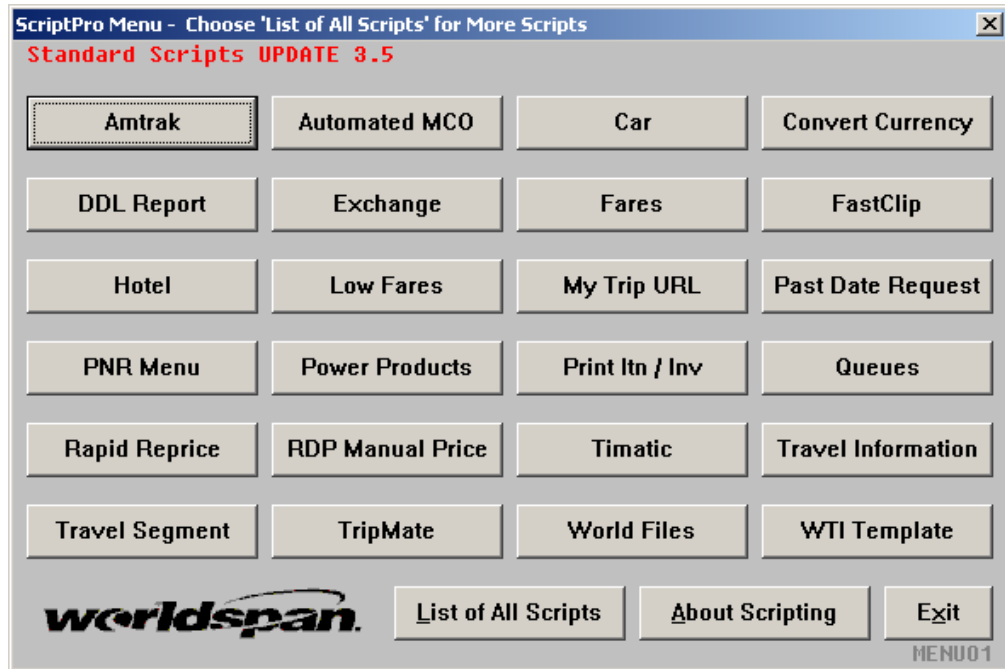
- Access the ScriptPro menu in Res by pressing <Ctrl>S,
 - Type Z4MENU.CSL or scroll and highlight
 - <Enter>
-

Continued on next page

Operating Instructions, Continued

Main Menu Options

When you call this script, the following screen displays:

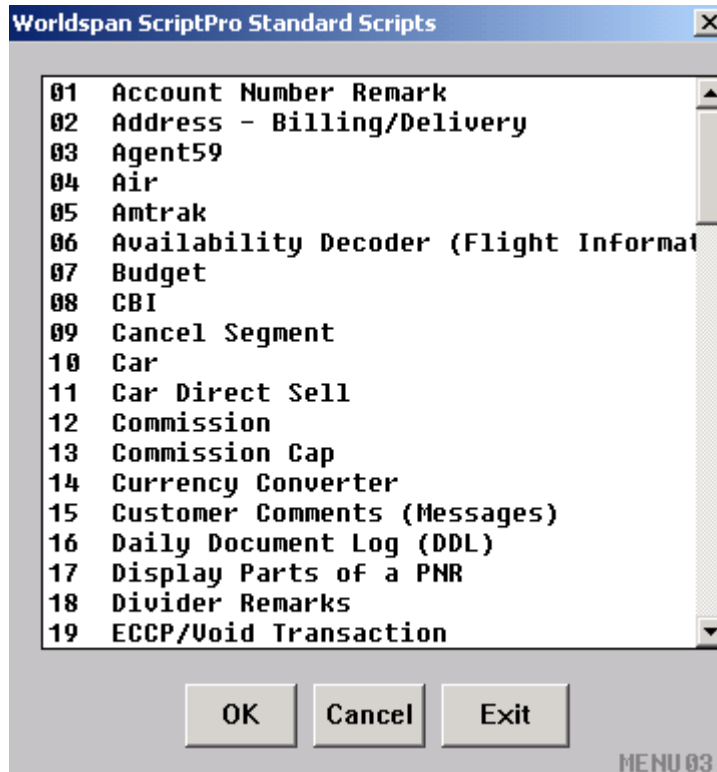


- The current version of ScriptPro is identified at the top of the page in red
- New scripts added with this release are on the top row and identified as ***NEW***
- Remaining scripts are listed alphabetically
- Worldspan selects which scripts are displayed on this menu
- Click on List of All Scripts to display an alphabetical list of all scripts
- Click on About Scripting to display information on scripting and an alphabetical list of all scripts with a brief description
- Click on Exit to end the script.

Continued on next page

Operating Instructions, Continued

List of All Scripts If you select List of All Scripts from the Main Menu, the following screen displays:

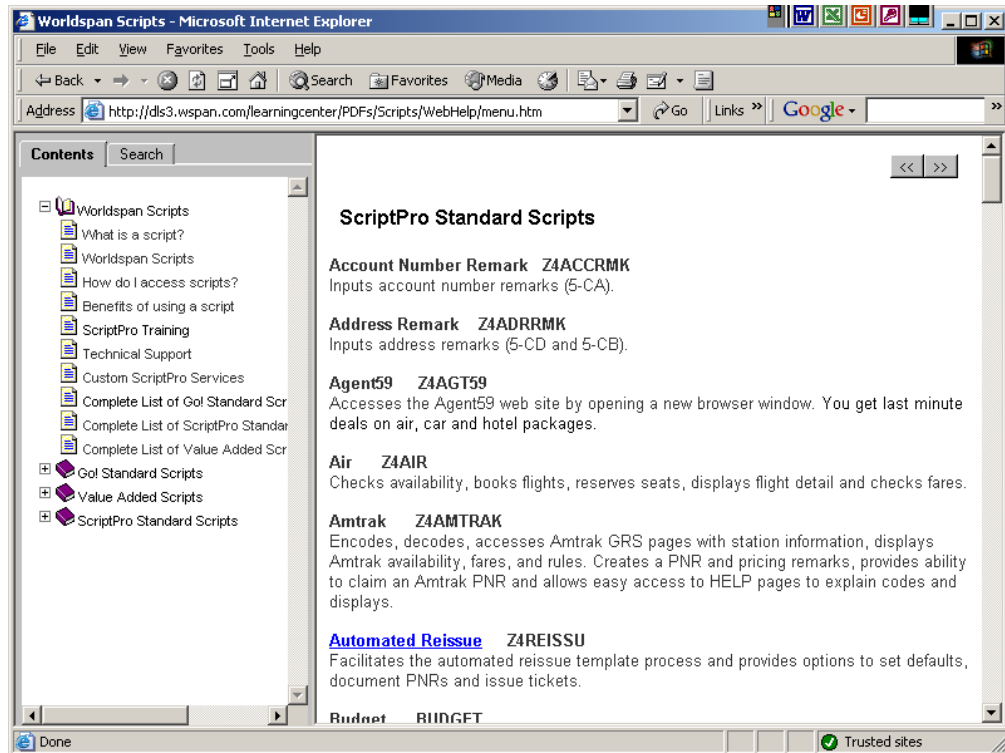


- Scripts are listed alphabetically by the script name.
- Move up and down in the list using the side bar.
- Highlight the script you want and click OK to begin using the script OR you can double click on the script name and begin using the script.
- Click Cancel if you want to return to the Main Menu listing.
- Click Exit to end the script.

Continued on next page

Operating Instructions, Continued

About Scripting When selecting About Scripting from the Main Menu, a dialog box appears with a Connect to Website button. Select the Connect to Website button to access the following:



- Click on the desired topic(s)
- Select Worldspan Scripts, then Complete List of ScriptPro Standard Scripts for a brief description of each script (click on the script names that are in blue text to access the script's Overview Document)
- Click the X in the upper right corner to close this window.

Quit To quit or stop the script, click on the Exit button in any dialog box.

Revisions 1/05 – Removed reference to WfW and updated screen captures.
