

ScriptPro

Passenger Name List

Overview

Introduction This document contains an overview of the Worldspan Passenger Name List Script available to users on Worldspan Go! Res.

File name Z4PSGR.CSL

Need Help? Click on the link below to submit a question or issue to the Worldspan Help Desk: <http://www.worldspan.com>, then select the Help Desk Support link from the menu on the left.

Overview This script assists in displaying, printing, and/or queuing group or passenger name lists for the home office or a bridge/branch location. Options for class of service, airports, and number of PNRs to display are available to customize the search. All PNRs with the indicated SID in the first phone field are searched to locate those matching the requested criteria and ultimately create the passenger name list. The types of list options available for Passenger and Groups are listed below:

Passenger Name List:

Confirmed Passengers
Confirmed/Ticketed
Unticketed PNRs
Waitlisted Segments
Priority Waitlist/Unticketed
Non-Priority Waitlist/Unticketed
Non-Priority Waitlist/Ticketed
Memo Segments

Group Names Only:

Confirmed Groups/Names Appended
Confirmed Groups/Names Pending
Confirmed Groups/Unticketed
Confirmed Groups/Ticketed
Groups/Names Pending/Ticketed
Waitlisted Groups
Priority Waitlist GRPS/Untktd
Priority Waitlist GRPS/Tktd
Priority WL GRPS/Names Pending
Priority WL GRPS/Names Advised
Non-Priority WL GRPS/Names Pending

Operating Instructions

Script Conventions

- Mandatory fields are indicated with burgundy text.
 - A black arrow pointing down indicates a drop down list is available for applicable choices for the input box, or the ability to scroll for more information.
 - Some dialog boxes may contain input fields with conditions that would disable other fields and/or buttons (e.g., selecting a Move option will disable the ability to select specific Rule Categories to view, or leaving a field blank disables other fields pertaining only to that blank field).
 - In a list where the choices are Yes or No, leaving the field blank is also No.
 - Use the <Tab> key to move in order to each input field. Use <Shift><Tab> to move in reverse order. Or use the mouse to click on the needed input field.
 - Some fields contain a “hot key.” This is an underlined letter. Pressing the <Alt> key and the underlined letter together will move the cursor directly to that input box.
 - The <Enter> key may be used in place of the OK button.
-

Need to Know

Previously, Worldspan Res had provided the capability to pause and resume ScriptPro scripts using the keystroke combinations <Ctrl>W and <Ctrl>R. Since Go! Res is on the Web, the right side of the window (Index/Go! Res scripts) takes on the Windows keystroke and local macro defaults. The left side (terminal emulator/Go! Res) has retained some of the Worldspan keystroke defaults. If the focus is in the terminal emulator/Res side, <Ctrl>W pauses a ScriptPro script and <Ctrl>R resumes a ScriptPro script. HOWEVER, when the focus is the right side/Go! Script, the <Ctrl>R does nothing or launches a macro and the <Ctrl>W shuts down the application. It is important to check the focus prior to using keystroke combinations. Simply click on the right or left to move the focus.

Continued on next page

Operating Instructions, Continued

Access

From Worldspan Go! Res:

- Access the script from the Utilities Tab in the Script Index
- Select Psgr Name List to launch the script

Or:

- Access the ScriptPro menu in Res by pressing <Ctrl>S,
 - Type z4psgr.csl or scroll and highlight
 - <Enter>
-

Main Dialog Box

The following main dialog box includes the options for the search request. The script defaults to the active SID and today's date. Type over the defaults to process another SID and/or date. All list types and options are available from this dialog box. Select OK to begin the search. Help to access this overview document, and Exit terminates the script.

The screenshot shows a dialog box titled "Passenger Name List Display" with a close button (X) in the top right corner. The dialog contains the following fields and options:

- SID to Search:** A text input field with the text "Defaults to Your SID or Emulating SID." to its right.
- Passenger Name List:** A dropdown menu.
- OR-** separator.
- Group Names Only:** A dropdown menu.
- Airline Code:** A text input field.
- OR- Name:** A dropdown menu.
- Flight Number:** A text input field.
- Departure Date:** A text input field.
- Departure Airport:** A text input field.
- OR- Name:** A dropdown menu.
- Arrival Airport:** A text input field.
- OR- Name:** A dropdown menu.
- Classes of Service:** Five small square checkboxes.
- If Class(es) Entered:** A dropdown menu with the option "Include Only These Classes".
- Display Last** **PNRs Booked** Defaults to All PNRs when Blank.
- For Options/Shortcuts, Click the Help Button.**
- Buttons: **OK** (with a blue checkmark icon), **Help** (with a yellow question mark icon), **Exit** (with a red X icon).
- Bottom right corner: **PSGR01**

Continued on next page

Operating Instructions, Continued

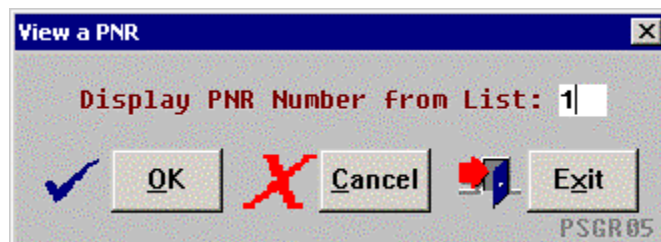
List Options

The following navigation dialog box enables the user to indicate what they want the script to do with the displayed list. The user may select to print the passenger name list to the hard copy printer, send the list to a queue, display a PNR from the list, return to the main dialog to modify or request a new list, or move Up and Down in the displayed list. Exit terminates the script.



View a PNR

When Display a PNR is selected, the following dialog requests the name item number from the list. Selecting Cancel returns to the List Options dialog box. Exit terminates the script.



Continued on next page

Operating Instructions, Continued

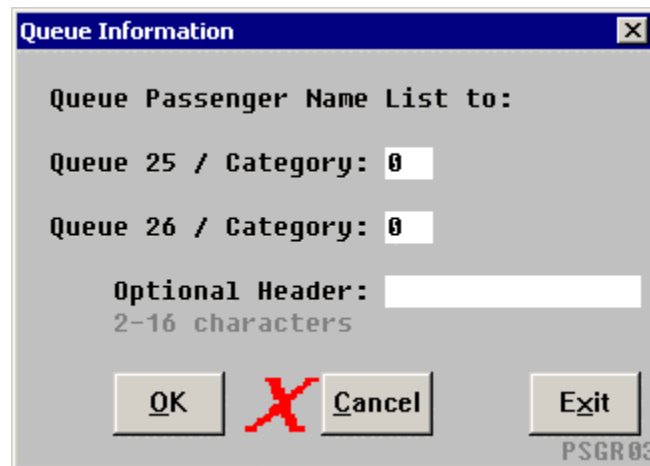
PNR Display

The following dialog box enables navigation once a PNR has been displayed from a list. The user may display PNRs within the list, redisplay the PNR and list, or move Up and Down within the PNR. Exit terminates the script.



Queue List

When Queue List is selected from the List Options dialog box, the following dialog enables the user to indicate the queue category and header. Selecting Cancel returns to the List Options dialog box. Exit terminates the script.

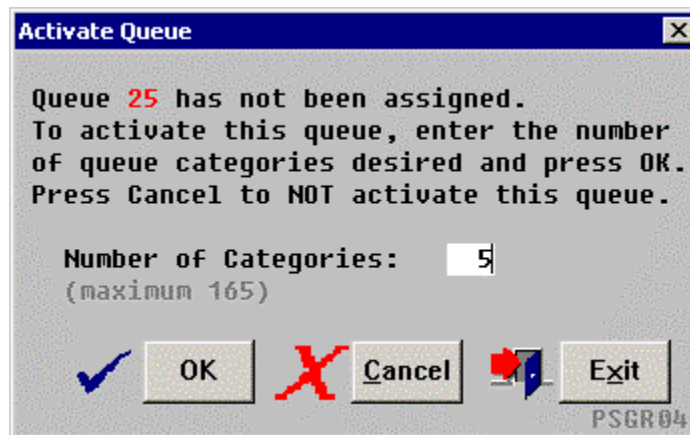


Continued on next page

Operating Instructions, Continued

Activate Specified Queue

If the queue selected in the previous box has not been activated, the following dialog box displays. The selected queue number is shown in red on the first line. When activating a queue, up to 165 categories can be opened when activating a queue. Select OK to activate the queue and continue to send the list. Select Cancel to return to the previous dialog box. Exit terminates the script.



Shortcuts

To display a Passenger List for:

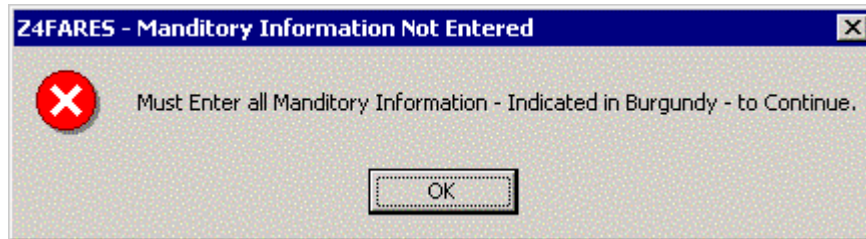
- A current date for all Classes of Service - leave the Departure Date and the Classes of Service fields blank.
- All board points preceding a specific off point - leave the Departure Airport and Airport Name fields blank.
- A specific board point and all down line off points - leave the arrival Airport and Airport Name fields blank.
- The last PNRs booked - enter the number of PNRs desired in the Display Last PNRs Booked field and leave the Classes of Service field blank.

Continued on next page

Operating Instructions, Continued

Errors

The following Error message is an example when mandatory or necessary information has not been provided:



Quit

To quit or stop the script, click on the Exit Button.

Revisions

1/05 – Removed reference to WfW.
