

# ScriptPro Timatic Script

## Overview

---

**Introduction** This document contains an overview of the Worldspan Timatic Script available to users on Worldspan Go! Res.

---

**File name** Z4TIMATC.CSL

---

**Need Help?** Click on the link below to submit a question or issue to the Worldspan Help Desk: <http://www.worldspan.com>, then select the Help Desk Support link from the menu on the left.

---

**Overview** The Timatic service is an electronic system developed by the TIM (Travel Information Manual) Group of fourteen airlines represented by International Airline Publications (IAP) and SITA (Societe Internationale De Telecommunications Aeronautiques). The system provides users with real time access to the Timatic database in Amsterdam. The Timatic script allows users to query the system for various local requirements, such as Health and Visa or scan the entire text of the TIM booklet. The database is updated daily by the TIM Group and is hosted in SITA's Atlanta Data Processing Centre.

---

# Operating Instructions

---

## Script Conventions

- Mandatory fields are indicated with burgundy text.
  - A black arrow pointing down indicates a drop down list is available for applicable choices for the input box, or the ability to scroll for more information.
  - Some dialog boxes may contain input fields with conditions that would disable other fields and/or buttons (e.g., selecting a Move option will disable the ability to select specific Rule Categories to view, or leaving a field blank disables other fields pertaining only to that blank field).
  - In a list where the choices are Yes or No, leaving the field blank is also No.
  - Use the <Tab> key to move in order to each input field. Use <Shift><Tab> to move in reverse order. Or use the mouse to click on the needed input field.
  - Some fields contain a “hot key.” This is an underlined letter. Pressing the <Alt> key and the underlined letter together will move the cursor directly to that input box.
  - The <Enter> key may be used in place of the OK button.
- 

## Need to Know

Previously, Worldspan Res had provided the capability to pause and resume ScriptPro scripts using the keystroke combinations <Ctrl>W and <Ctrl>R. Since Go! Res is on the Web, the right side of the window (Index/Go! Res scripts) takes on the Windows keystroke and local macro defaults. The left side (terminal emulator/Go! Res) has retained some of the Worldspan keystroke defaults. If the focus is in the terminal emulator/Res side, <Ctrl>W pauses a ScriptPro script and <Ctrl>R resumes a ScriptPro script. HOWEVER, when the focus is the right side/Go! Script, the <Ctrl>R does nothing or launches a macro and the <Ctrl>W shuts down the application. It is important to check the focus prior to using keystroke combinations. Simply click on the right or left to move the focus.

---

*Continued on next page*

## Operating Instructions, Continued

---

### Access

From Worldspan Go! Res:

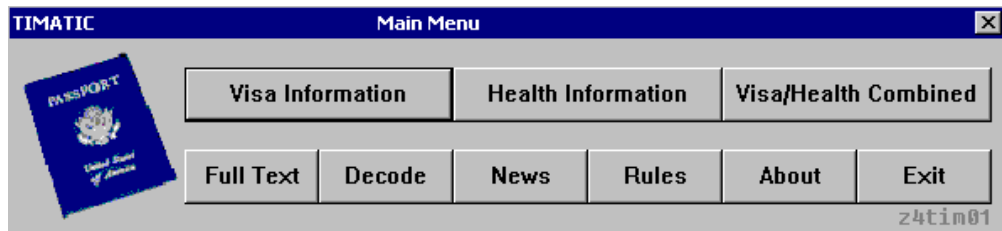
- Access the script from the Utilities Tab in the Script Index
- Select Timatic to launch the script,

Or:

- Access the ScriptPro menu in Res by pressing <Ctrl>S,
  - Type z4timatc.csl or scroll and highlight
  - <Enter>
- 

### Main Menu

When you launch the Timatic script, the following screen displays.



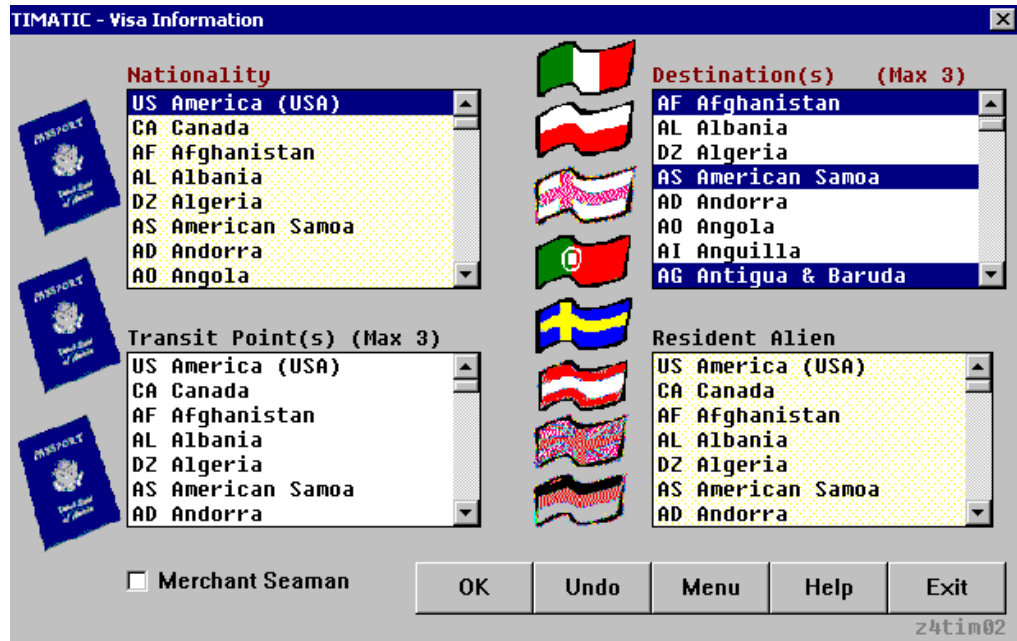
- Click on Visa Information to display a selection screen to choose a maximum of three (3) destinations.
  - Click on Health Information to display a selection screen to choose a maximum of three (3) destinations.
  - Click on Visa/Health Combined to display a single screen to select both visa and health information to choose a maximum of three (3) destinations.
  - Click on Full Text to xxxxxxxxxxxxxxxxxxxxxxxxxxxxxxx
  - Click on Decode to display a fill-in screen to decode city codes.
  - Click on News to display a list of current news items.
  - Click on Rules to display any rules associated with a specific warning.
  - Click About to read about Timatic.
  - Click Exit to end this script.
- 

*Continued on next page*

## Operating Instructions, Continued

### Visa Information

When you click on Visa Information from the Timatic Main Menu, the following screen displays:



- Highlight the traveler nationality.
- Select up to three (3) destination points. If you want to select more than one destination, hold the <CTRL> button while you highlight the destination locations. All location(s) will be highlighted in blue.
- Select up to a maximum of three (3) transit points (travel through points) by highlighting them. To select more than one transit point, hold the <CTRL> button while you highlight the transit point. All transit point(s) selected will be highlighted in blue.
- If the traveler is a resident alien, highlight the country.
- If the traveler is a Merchant Seaman, click the box.
- Click OK to continue, Undo to clear the current selections, Menu to return to the Main Menu for the Timatic Script, Help to view information on keyboard and mouse tips and Exit to end the script.

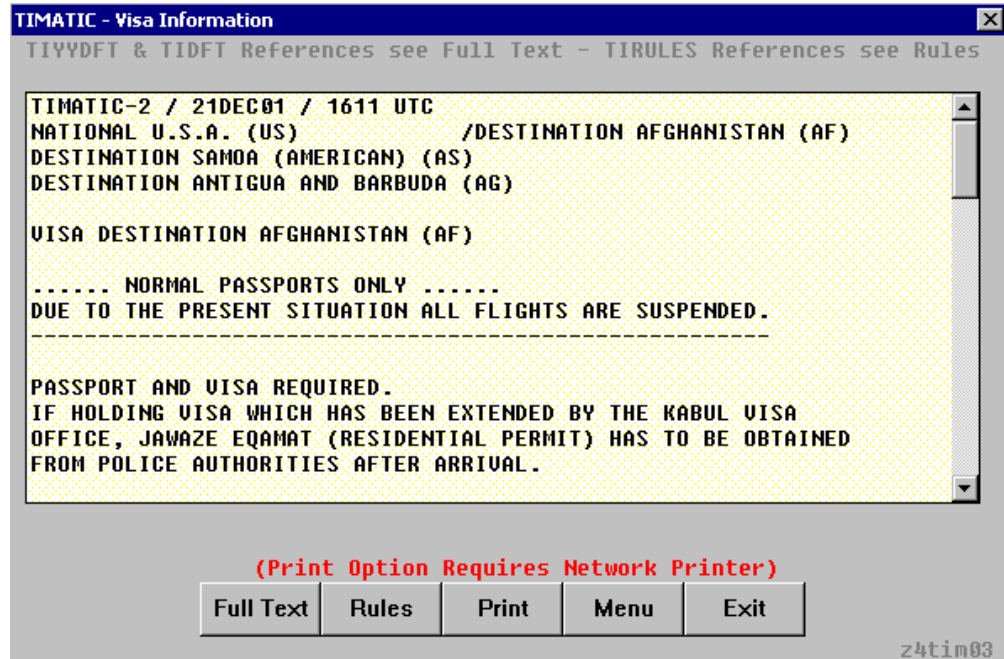
*Continued on next page*

## Operating Instructions, Continued

---

### Visa Information, continued

An example of the Visa Information Page is as follows:



```
TIMATIC - Visa Information
TIYYDFT & TIDFT References see Full Text - TIRULES References see Rules

TIMATIC-2 / 21DEC01 / 1611 UTC
NATIONAL U.S.A. (US) /DESTINATION AFGHANISTAN (AF)
DESTINATION SAMOA (AMERICAN) (AS)
DESTINATION ANTIGUA AND BARBUDA (AG)

VISA DESTINATION AFGHANISTAN (AF)

..... NORMAL PASSPORTS ONLY .....
DUE TO THE PRESENT SITUATION ALL FLIGHTS ARE SUSPENDED.
-----

PASSPORT AND VISA REQUIRED.
IF HOLDING VISA WHICH HAS BEEN EXTENDED BY THE KABUL VISA
OFFICE, JAWAZE EQAMAT (RESIDENTIAL PERMIT) HAS TO BE OBTAINED
FROM POLICE AUTHORITIES AFTER ARRIVAL.

(Print Option Requires Network Printer)
Full Text Rules Print Menu Exit

z4tim03
```

- Click on Full Text to access the Full Text dialog box, which allows the user to query Timatic and obtain a full text display of eight topics.
- Click on Rules to review any special rules associated with your visa selection (there may be none).
- Click on Print to print a copy of the visa information to a **network** printer.
- Click on Menu to return to the Main Menu of the Timatic script.
- Click on Exit to end the script.

*Continued on next page*

## Operating Instructions, Continued

### Health Information

When you click on Health Information from the Timatic Main Menu, the following screen displays:

**Nationality**  
US America (USA)  
CA Canada  
AF Afghanistan  
AL Albania

**Country of Embarkation**  
US America (USA)  
CA Canada  
AF Afghanistan  
AL Albania

**Transit Points (Max 3)**  
US America (USA)  
CA Canada  
AF Afghanistan  
AL Albania

Merchant Seaman

**Destination(s) (Max 3)**  
DZ Algeria  
AS American Samoa  
AD Andorra  
AO Angola

**Visited Countries within 6 days of Embarkation (Max 3)**  
US America (USA)  
CA Canada  
AF Afghanistan  
AL Albania

**Resident Alien**  
US America (USA)  
CA Canada  
AF Afghanistan  
AL Albania

OK Undo Menu Help Exit

z4tim13

- Highlight the traveler nationality.
- Highlight up to three (3) destination points. If you want to select more than one destination, hold the <CTRL> button while you highlight the destination locations. All location(s) will be highlighted in blue.
- Highlight the country of embarkation.
- Highlight countries visited within six (6) days of the embarkation date.
- Highlight up to three (3) transit points.
- Highlight the country if the traveler is a resident alien.
- Click OK to continue, Undo to clear the current selections, Menu to return to the Main Menu for the Timatic Script, Help to view information on keyboard and mouse tips and Exit to end the script.

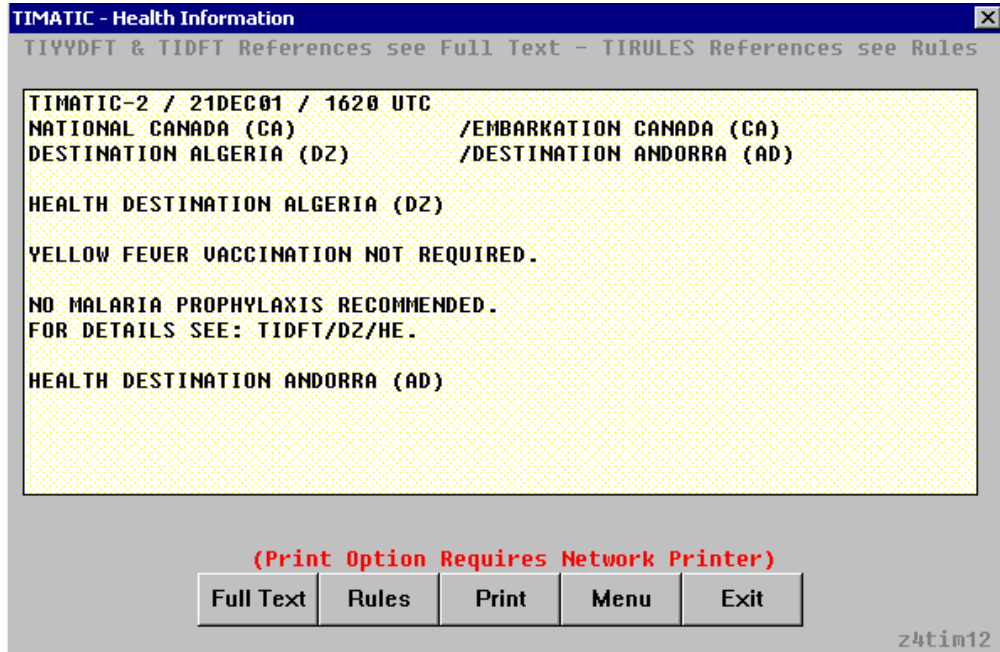
*Continued on next page*

## Operating Instructions, Continued

---

### Health Information, continued

An example of the Health Information Page is as follows:



- Click on Full Text to access the Full Text dialog box which allows the user to query Timatic and obtain a full text display of eight topics.
- Click on Rules to review any special rules associated with your health selection (there may be none).
- Click on Print to print a copy of the health information to a **network** printer.
- Click on Menu to return to the Main Menu of the Timatic script.
- Click on Exit to end the script.

*Continued on next page*

## Operating Instructions, Continued

### Combined Visa and Health Information

The following dialog box allows the user to query the Timatic database for combined Visa and Health information for a maximum of three (3) destinations:



- Follow the directions for both the visa and health instructions on the previous pages.
- Click OK to continue, Undo to clear the current selections, Menu to return to the Main Menu for the Timatic Script, Help to view information on keyboard and mouse tips and Exit to end the script.

*Continued on next page*

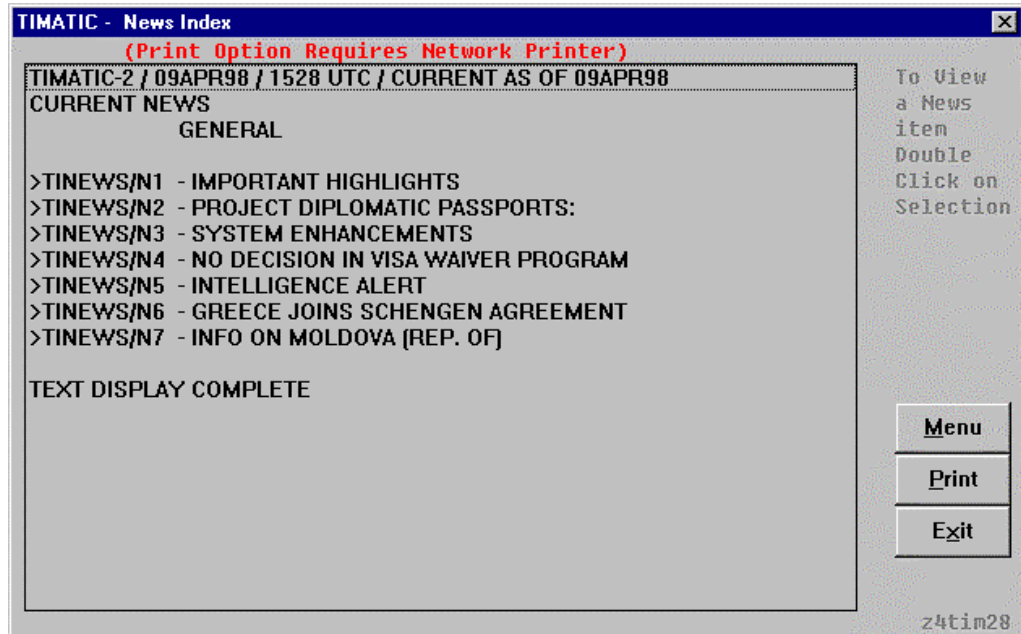


## Operating Instructions, Continued

---

### News

The following dialog box accesses the Timatic news topics:



- Double click on the topic to display the information.
- Click on Menu to return to the Timatic Main Menu.
- Click on Print to print to a **network** printer.
- Click on Exit to end the script.

---

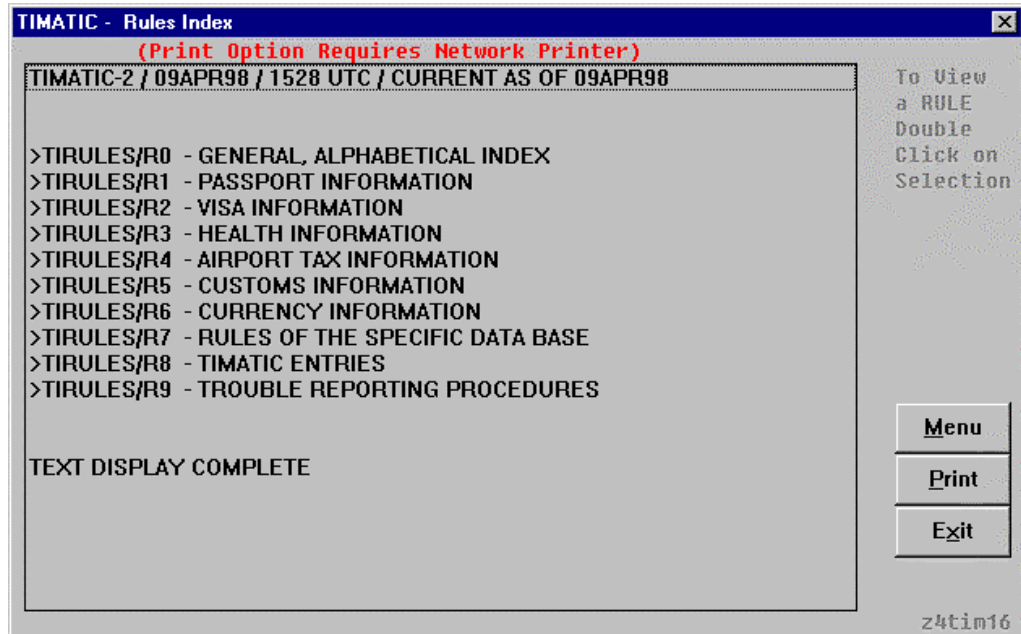
*Continued on next page*

## Operating Instructions, Continued

---

### Rules

The following dialog box accesses Timatic rules:



- Double click on the topic to display the information.
- Click on Menu to return to the Timatic Main Menu.
- Click on Print to print to a **network** printer.
- Click on Exit to end the script.

---

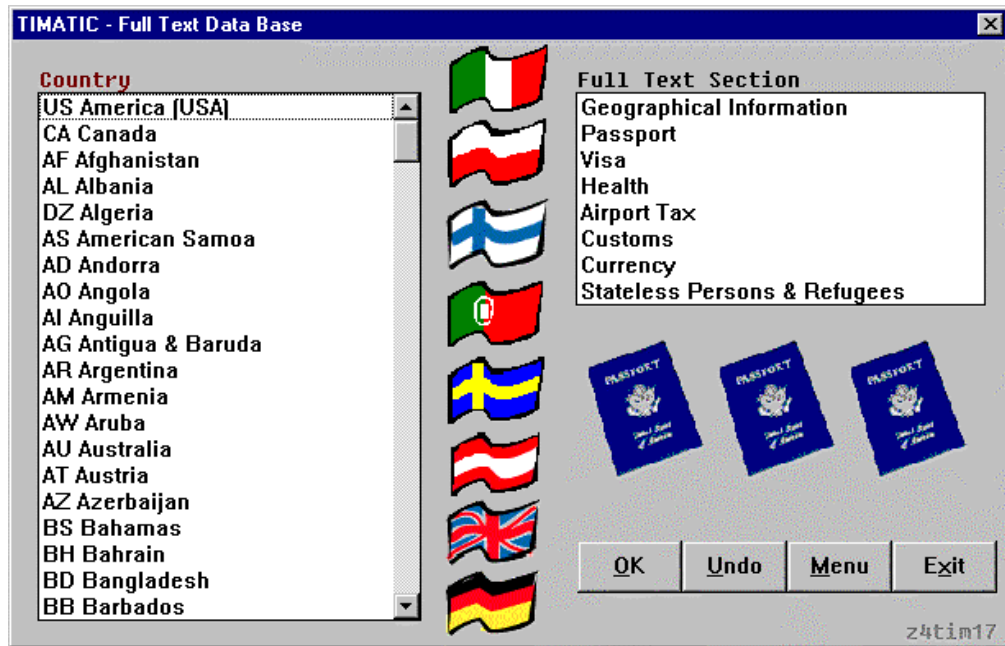
*Continued on next page*

## Operating Instructions, Continued

---

### Full Text Display

The Full Text dialog box allows the user to query Timatic and obtain a full text display of eight topics:



- Highlight the country.
- Highlight the topic to display.
- Click on OK to continue.
- Click on Undo to clear your choices and start over.
- Click on Menu to return to the Main Menu for the Timatic script.
- Click on Exit to end the script.

*Continued on next page*

## Operating Instructions, Continued

---

### Decode

The following dialog box decodes any three letter city code:



- Enter the three-character city or airport code in the available box.
- Click OK to continue and display the full name.
- Click Menu to return to the Main Menu of the Timatic script.
- Click Exit to end the script.

---

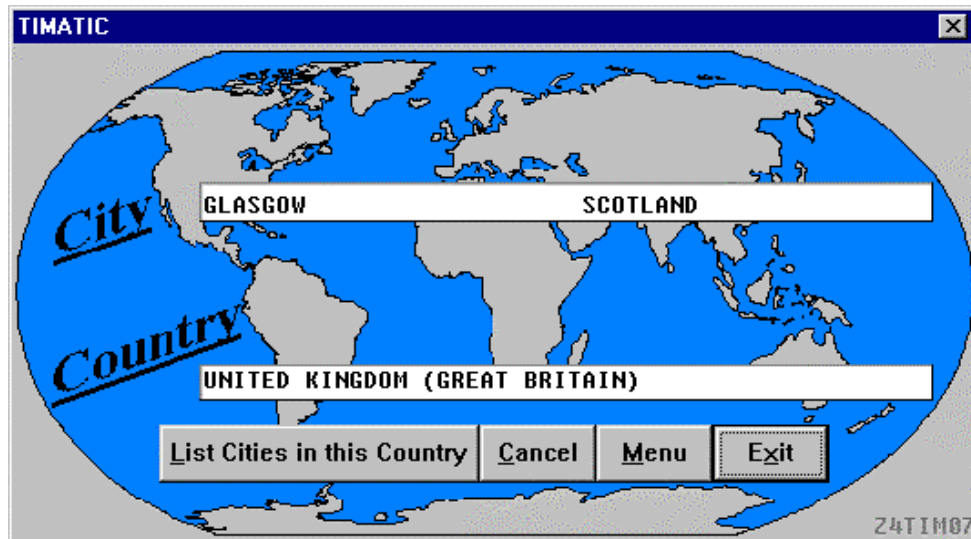
*Continued on next page*

## Operating Instructions, Continued

---

**Decode,**  
continued

The following screen displays the information on the city or airport code requested:



- Click on List Cities in this Country to find all city and airport codes for the selected country.
- Click on Cancel to return to the Decode Options menu.
- Click on Menu to return to the Main Menu of the Timatic script.
- Click on Exit to end the script.

---

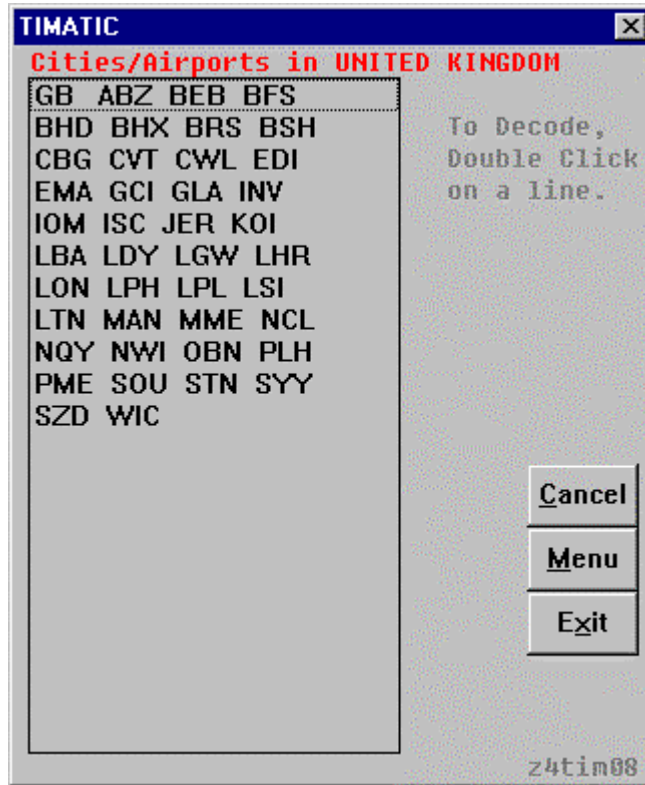
*Continued on next page*

## Operating Instructions, Continued

---

**Decode,**  
continued

If you selected the option to List Cities in this Country, the following screen displays:



- Double click on any of the lines of three character codes to display their names and locations.
- Click on Cancel to clear this screen and return to the original city or airport code decode screen.
- Click on Menu to return to the Main Menu of the Timatic script.
- Click on Exit to end the script.

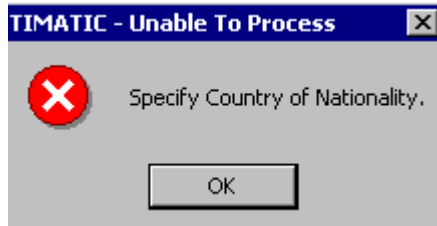
---

*Continued on next page*

## Operating Instructions, Continued

---

**Error Message** The following is an example of an error message that may appear in the Timatic script:



- Error messages appear in Timatic box
- The message appears to the right of the X
- The message is in black
- When you receive an error message with this script, click OK to continue and correct the error.

---

**Quit** To quit or stop the script, click on the Exit button in any dialog box.

---

**Revisions** 01/05 – Removed reference to WfW.

---