

# ScriptPro

## Travel Information Links Script

### Overview

---

**Introduction** This document contains an overview of the Worldspan Travel Information Links Script available to users on Worldspan Go! Res.

---

**File name**

File (Script) Name	Brief Description
Z4TVLINP.CSL	Accesses web sites for information.

---

**Need Help?** Click on the link below to submit a question or issue to the Worldspan Help Desk: <http://www.worldspan.com>, then select the Help Desk Support link from the menu on the left.

---

**Overview** This script enables easy access to web sites that contain travel documentation and per diem information. Additional links will be added by Training Development on a recommended and as needed basis.

Selections include:  
Travel Documentation  
Domestic per diem rates  
OCONUS per diem rates  
Overseas per diem rates

This script opens an instance of the browser for each request. Select the 'X' at the top right to close that browser instance.

Worldspan Go! or internet access (IE 5.0 and higher) is required for this script. Currently, certification on Microsoft 2000 and Windows NT operating platforms has not been verified for this script.

Note: This script uses the file Z4QUOTE.DAT to pass variable information outside of the ScriptPro application. When the script cannot find this file, a dialog box will prompt for the input of a quote. This extra step in the process can be avoided when the Z4QUOTE.DAT file is not deleted.

---

# Operating Instructions

---

## Script Conventions

- Mandatory fields are indicated with burgundy text.
  - A black arrow pointing down indicates a drop down list is available for applicable choices for the input box, or the ability to scroll for more information.
  - Some dialog boxes may contain input fields with conditions that would disable other fields and/or buttons (e.g., selecting a Move option will disable the ability to select specific Rule Categories to view, or leaving a field blank disables other fields pertaining only to that blank field).
  - In a list where the choices are Yes or No, leaving the field blank is also No.
  - Use the <Tab> key to move in order to each input field. Use <Shift><Tab> to move in reverse order. Or use the mouse to click on the needed input field.
  - Some fields contain a “hot key.” This is an underlined letter. Pressing the <Alt> key and the underlined letter together will move the cursor directly to that input box.
  - The <Enter> key may be used in place of the OK button.
- 

## Need to Know

Previously, Worldspan Res had provided the capability to pause and resume ScriptPro scripts using the keystroke combinations <Ctrl>W and <Ctrl>R. Since Go! Res is on the Web, the right side of the window (Index/Go! Res scripts) takes on the Windows keystroke and local macro defaults. The left side (terminal emulator/Go! Res) has retained some of the Worldspan keystroke defaults. If the focus is in the terminal emulator/Res side, <Ctrl>W pauses a ScriptPro script and <Ctrl>R resumes a ScriptPro script. HOWEVER, when the focus is the right side/Go! Script, the <Ctrl>R does nothing or launches a macro and the <Ctrl>W shuts down the application. It is important to check the focus prior to using keystroke combinations. Simply click on the right or left to move the focus.

---

*Continued on next page*

## Operating Instructions, Continued

---

### Access

From Worldspan Go! Res:

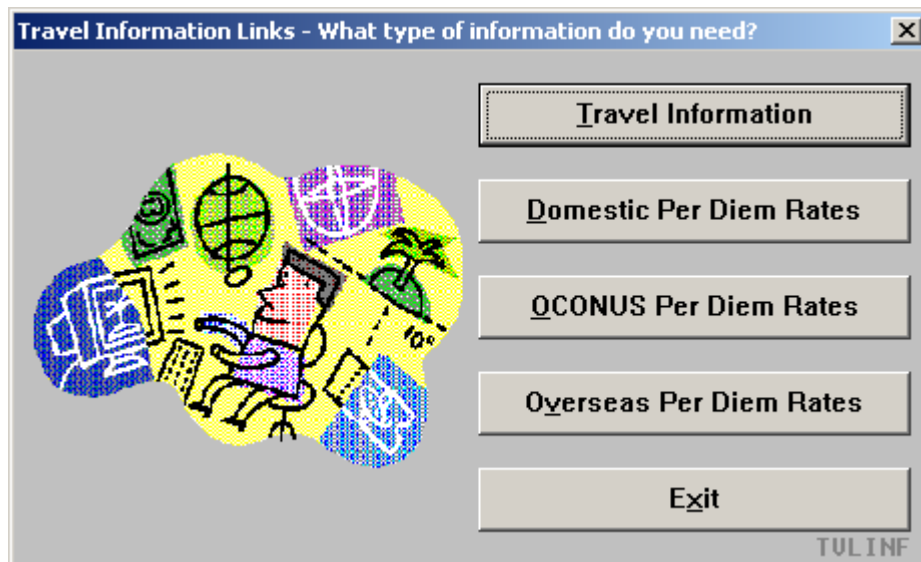
- Access the script from the Misc Tab in the Script Index
- Select Travel Information Links to launch the script

Or:

- Access the ScriptPro menu in Res by pressing <Ctrl>S,
  - Type z4tvlinf.csl or scroll and highlight
  - <Enter>
- 

### Main Menu

The following main dialog box contains the menu of information available. Select the desired option to continue to the site. Select Exit to terminate the script.



The web sites are maintained by the site owners and are subject to change without notice.

---

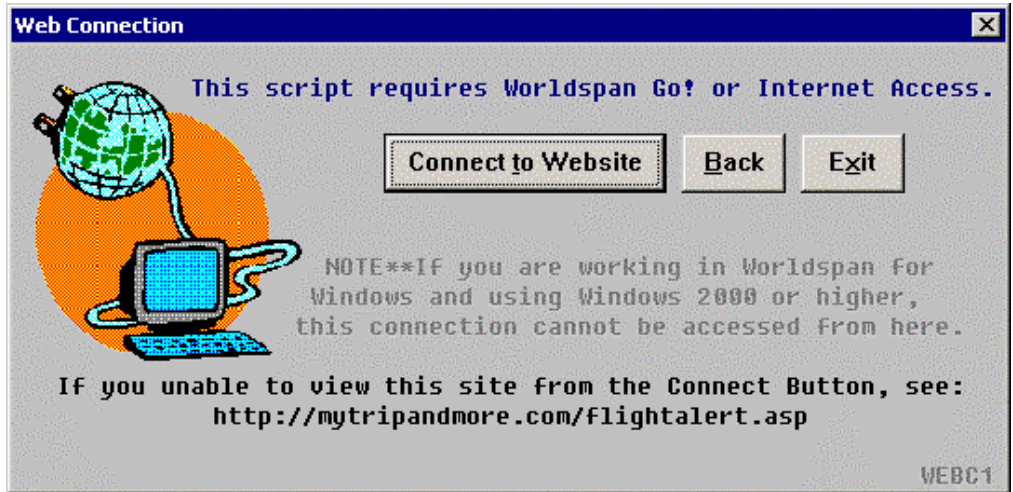
*Continue on next page*

## Operating Instructions, Continued

---

### Connect to Website

This dialog box displays the URL of the information selected and enables the user to connect to the site or Cancel and return to the menu. Exit terminates the script.



The URL of the selection is provided at the bottom of this dialog box so the user may manually access the site for the information.

---

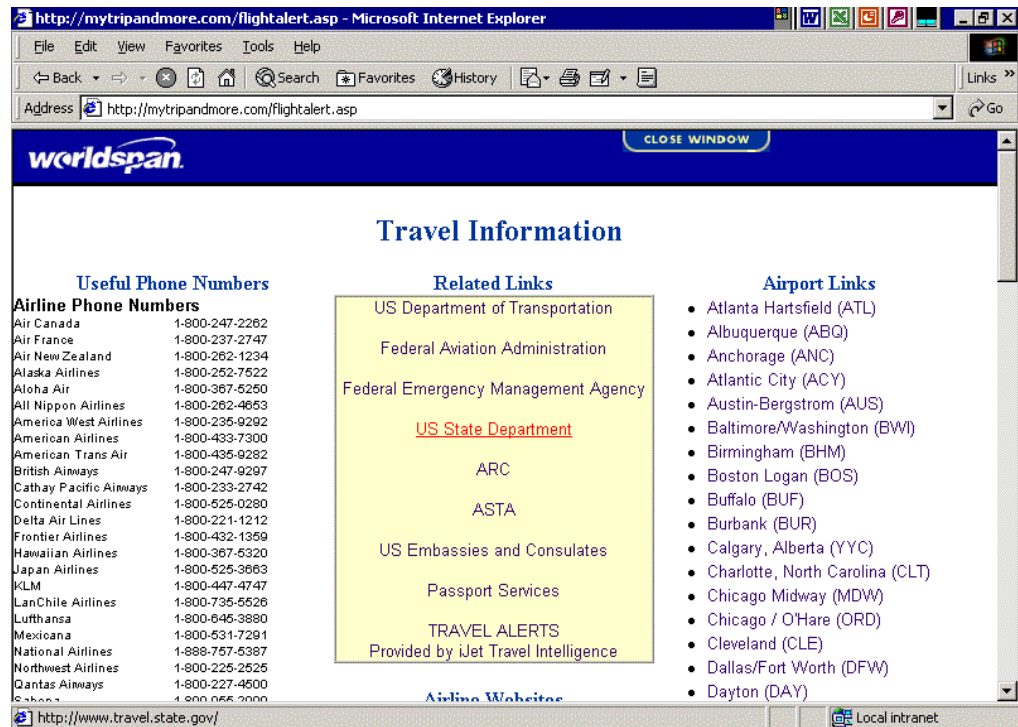
*Continued on next page*

## Operating Instructions, Continued

---

### Result

The script connects the user to the web page. This is an example of the phone numbers and web links.



### Errors

If the user does not choose a website or link it wants to view, an error message will be displayed. User will have to make a selection, or exit the script.



### Quit

To quit or stop the script, either click on the Exit Button or Script Index.

### Revisions

1/5 – Removed reference to WfW and updated screen capture.