

ScriptPro

World File Delete Script

Overview

Introduction This document contains an overview of the Worldspan World File Delete script available to users on Worldspan Go! Res.

File name

File (Script) Name	Brief Description
Z4WFDEL	Displays and deletes World Files, deletes displayed World Files, deletes World Files from queue, and restores deleted World Files. User has the option to delete automatically or be prompted before each deletion.

Need Help? Click on the link below to submit a question or issue to the Worldspan Help Desk: <http://www.worldspan.com>, then select the Help Desk Support link from the menu on the left.

Overview This script deletes World Files using three methods: Display and Delete a World File, Delete the Displayed World File on the screen, and Delete World Files from Q98 using search criteria based on the copy date. The user is able to input the last copy date, which would eliminate any World File copied since that date. The script searches the World Files using the copy date criteria with the World File Search and Update product. It sends the World Files to Queue 98 and the script works each World File in that queue. The user has the option to automatically delete or be prompted before each World File is deleted. The script also restores World Files deleted in error.

Operating Instructions

Script Conventions

- Mandatory fields are indicated with burgundy text.
 - A black arrow pointing down indicates a drop down list is available for applicable choices for the input box, or the ability to scroll for more information.
 - Some dialog boxes may contain input fields with conditions that would disable other fields and/or buttons (e.g., selecting a Move option will disable the ability to select specific Rule Categories to view, or leaving a field blank disables other fields pertaining only to that blank field).
 - In a list where the choices are Yes or No, leaving the field blank is also No.
 - Use the <Tab> key to move in order to each input field. Use <Shift><Tab> to move in reverse order. Or use the mouse to click on the needed input field.
 - Some fields contain a “hot key.” This is an underlined letter. Pressing the <Alt> key and the underlined letter together will move the cursor directly to that input box.
 - The <Enter> key may be used in place of the OK button.
-

Need to Know

Previously, Worldspan Res had provided the capability to pause and resume ScriptPro scripts using the keystroke combinations <Ctrl>W and <Ctrl>R. Since Go! Res is on the Web, the right side of the window (Index/Go! Res scripts) takes on the Windows keystroke and local macro defaults. The left side (terminal emulator/Go! Res) has retained some of the Worldspan keystroke defaults. If the focus is in the terminal emulator/Res side, <Ctrl>W pauses a ScriptPro script and <Ctrl>R resumes a ScriptPro script. HOWEVER, when the focus is the right side/Go! Script, the <Ctrl>R does nothing or launches a macro and the <Ctrl>W shuts down the application. It is important to check the focus prior to using keystroke combinations. Simply click on the right or left to move the focus.

Continued on next page

Operating Instructions, Continued

Access

From Worldspan Go! Res:

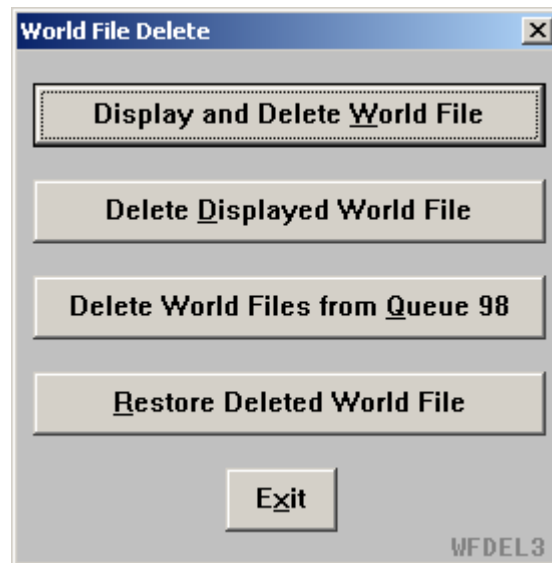
- Access the script from the Utilities Index Tab
- Select World File Delete to launch the script,

Or:

- Access the ScriptPro menu in Res by pressing <Ctrl>S,
 - Type z4wfdel.csl or scroll and highlight
 - <Enter>
-

Main Menu

The following dialog box provides the three methods to delete World Files. Display and Delete World File accesses the next dialog box requesting the World File information. Delete Displayed World File immediately deletes the World File displayed prior to launching the script. Delete World Files from Queue 98 initiates the search process, accesses the queue, and deletes the World Files on queue. The option to Restore a World File is included for those World Files deleted in error. Exit, exits the script.

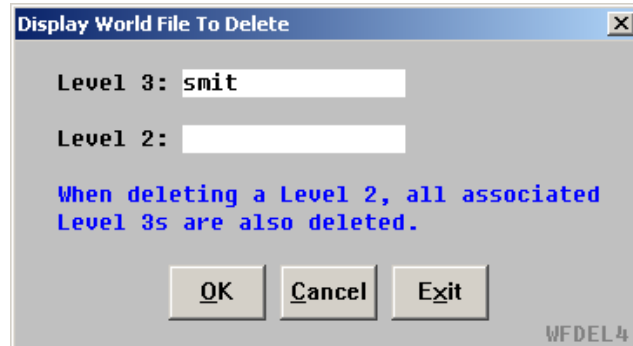


Continue on next page

Operating Instructions, Continued

Display and Delete World File

The following dialog box is displayed when Display and Delete World File is selected. The user can enter the name of either level 2 or level 3, or both. When a level 2 is selected, all associated Level 3s are set up for deletion when the Level 2 is deleted.



Similar Name List

A similar name list box is displayed if more than one name is found. The user enters the desired World File line number to be deleted. Down and Up indicate movement within the list. More References displays additional similar names. Cancel returns to the previous dialog box.



Continue on next page

Operating Instructions, Continued

Correct World File

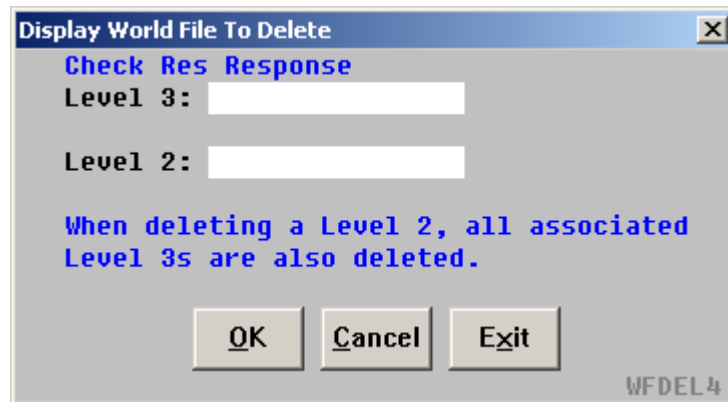
When the selected World File is displayed, the following message box comes up to enable the user to verify if the displayed World File is the correct one for deletion.



Delete Displayed World File

When Delete Displayed World File is selected, the World File displayed in Res is immediately deleted. If a World File is not active, the following response appears in Res and the dialog box is displayed prompting to check the response on the Res screen and enabling the user to display a World File.

```
>GPDELETE  
WORLD FILE MUST BE RETRIEVED
```

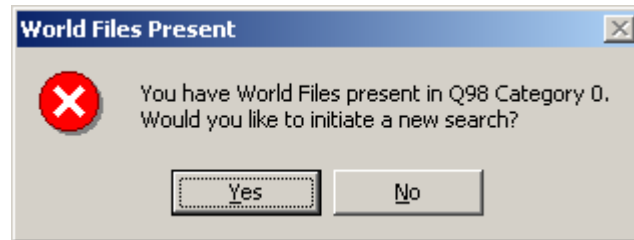


Continue on next page

Operating Instructions, Continued

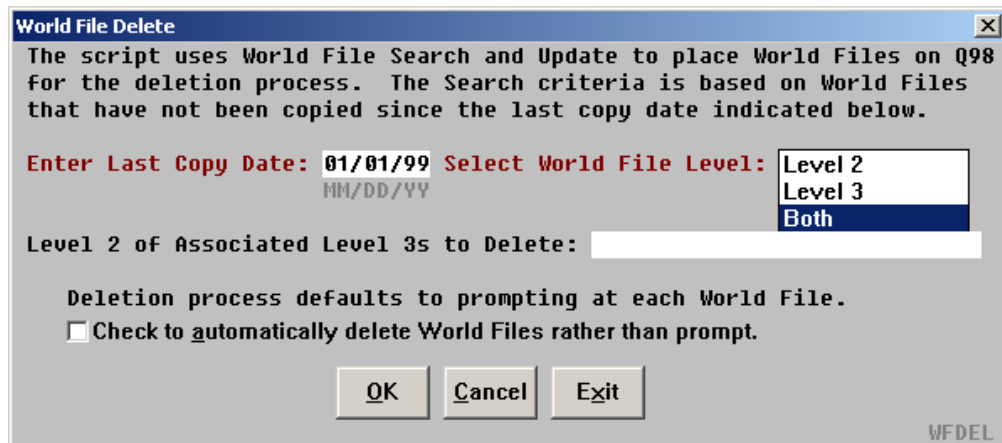
Delete World Files from Queue

When Delete World Files from Q98 is selected, the following dialog box displays enabling the user to immediately access and delete World Files from Queue 98 or begin a new search. When Yes is selected to initiate a new search, the next dialog box is displayed.



Search Criteria

The Last Copy Date is the primary search criteria to determine which World Files to set up for deletion. All World Files not copied since the date entered are placed on Queue 98. The user may select to search ALL Level 2s, ALL Level 3s or both (ALL World Files) for the date criteria. An option to only search associated Level 3s of a specific Level 2 is provided and the input of the name of the Level 2 is required. The user has the option to automatically delete all World Files on queue or be prompted with the next dialog box each time a World File is displayed for deletion. Cancel returns to the main menu.



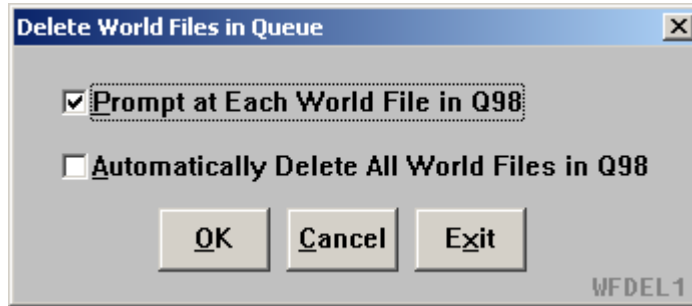
The new search will add World Files to any existing World Files on queue and it is suggested to allow prompting before each deletion to limit the chance of deleting a World File that does not comply with the current search.

Continue on next page

Operating Instructions, Continued

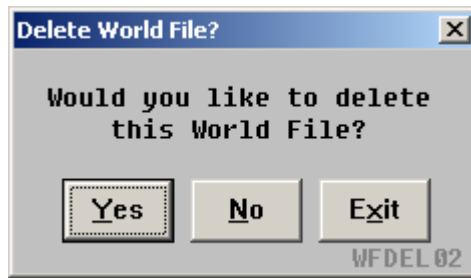
New Search Bypass

When No is selected when asked Would you like to initiate a new search, the following dialog box is displayed. This enables the user to select to automatically delete all World Files on queue or receive a prompt for each World File.



Delete Prompt

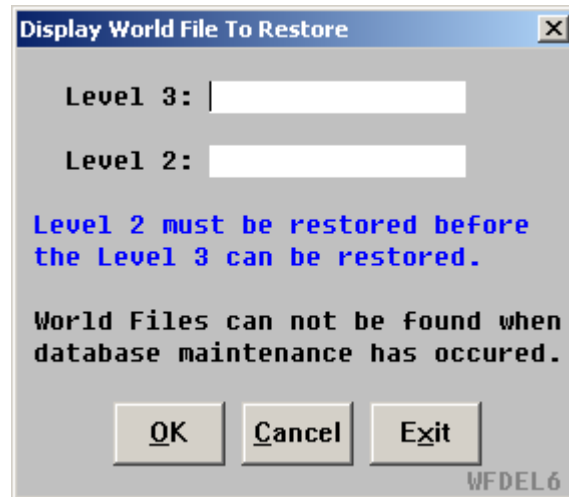
When the user selects Prompt at Each World File in Q98, the World File is displayed and the following message box comes up to select Yes to delete the World File or No to remove it from queue.



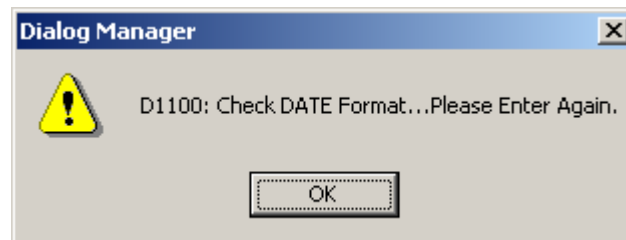
Continue on next page

Operating Instructions, Continued

Restore Deleted World File World Files deleted in error can be restored with this option. When a World File is deleted, the original World File is held in the database until the next scheduled World File maintenance. User must restore the World File prior to maintenance or the World File deleted is permanently removed from the database and cannot be restored.



Errors The following error message example indicates the date was not entered as requested in the script.



Quit To quit or stop the script, either click on the Exit Button or select My Links or Index on the Go! Res navigation bar.

Revisions 1/05 – Removed reference to WfW.
